

ALL ALUMINUM RETROFIT ROOF DRAIN

ALUMINATOR

FEATURES:

- All Aluminum Retrofit Drain with Aluminum Body
- Constructed of Heavy Duty Spun Aluminum for Quick & Easy Installation
- Heavy Duty Aluminum Ring that is 1-1/4" Tall
12 Scallops to Maximize Drainage
Seep Holes on Bottom of Ring & Bolt in Place
3 Bolt Aluminum Strainer that is 10" Diameter x 6" Tall)
- Standard with ProSeal Rubber Seal
- Larger Stud Diameter for Increased Strength of Hardware
- Available in Sizes of 2" 3", 4", 5", 6" & 8" (2" & 8"w/ Tape Seal)
- Includes Strong Mechanical Seal that Prevents Water Back-up Issues
- Flange Diameter 16" - Drain Outlet Length 12"
- Certified to conform with ASME A112.6.4 & CSA B79 Plumbing Standards (3", 4", 5" and 6" sizes only)

OPTIONS/ACCESSORIES

• OVERFLOW RING

Marathon Roofing Product's Overflow option is a spun aluminum attachment that is designed to use with all of our aluminum drains with clamping ring. It provides additional drainage when water levels exceeds 2 inches. 2" & 4" aluminum overflow insert available (call for details)

- 2.75" LOW PROFILE ALUMINUM STRAINER
- PVC/TPO COATINGS

Our Aluminator Flange has the option to be PVC or TPO Coated for direct hot air welding of PVC and TPO type roofing membranes.

THE CHART BELOW SHOWS OUR SEAL EXPANSION CAPACITIES FOR OUR ALUMINATOR & PROSEAL DRAINS

Drain Size	Starting OD of Seal/Outlet	Fits into Pipe ID	Maximum Expansion Diameter of Seal	ID of Seal
3"	2.85"	2-7/8" – 3-1/4"	3.40"	2.19"
4"	3.80"	3-7/8" – 4-1/4"	4.40"	3.12"
5"	4.80"	4-7/8" – 5-1/4"	5.40"	4.15"
6"	5.70"	5-7/8" – 6-1/4"	6.40"	5"



FLOW CAPACITY

Size	GPM
3"	45
4"	85
5"	180
6"	210

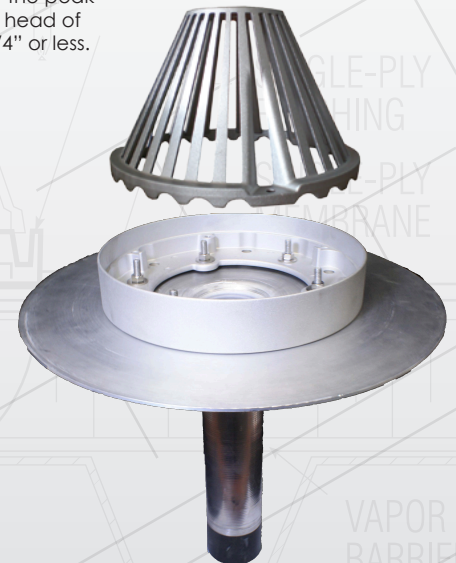


ProSeal Seal

Above drains were able to perform at the peak rates with a head of water of 3-1/4" or less.



Low profile aluminum strainer



Aluminator with overflow ring

Due to variations in manufacturing and job site inconsistencies the above data are guidelines only and are not guaranteed for anyspecific situations.



PVC coating only