

Setting Up Ready Railing

Create a Scenic Outdoor Experience in Minutes

Easy Assembly Perfect For :



Restaurants



Breweries



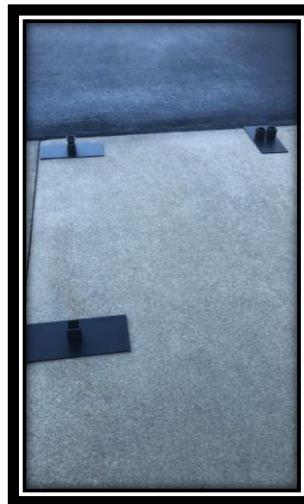
Outdoor Venues

Superior Aluminum Ready Railing

Installation is simple, quick, and hassle free; and it's as easy as 1,2,3.

1. Place bases in the desired pattern
2. Insert railing panels into bases
3. Bolt the panel to the base to finish

It really is that easy!! Once you're done with or need to move your Ready Railing system, simply follow the instructions in reverse!!



1.



2.



3.

Panels available in 4', 5' and 6' sections

Single Bases available for ends, Double bases for continuous runs/corners