



MARATHON ROOFING PRODUCTS, INC
 3310 N BENZING ROAD
 ORCHARD PARK, NY 14127-1538
 TOLL FREE: 1-800-828-8424
 PHONE: (716) 332-7673
 FAX: (716) 332-7676
 www.marathondrains.com

SELECT DESIRED SIZE:

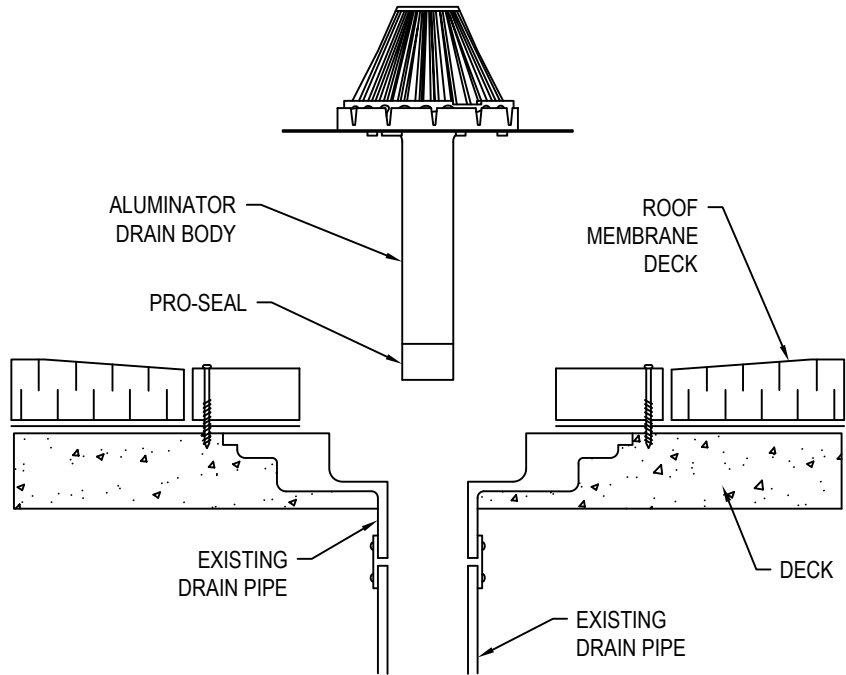
- 3" (76 MM)
- 4" (102 MM)
- 5" (127 MM)
- 6" (152 MM)
- 8" (203 MM)

SELECT DESIRED FLANGE COAT:

- PVC
- TPO

SELECT DESIRED ACCESSORIES:

- 2" ALUMINUM COMBINATION CLAMPING RING/ OVERFLOW DAM
- 2" AND 4" ALUMINUM OVERFLOW INSERT
- 2 3/4" ALUMINUM LOW PROFILE STRAINER



DETAIL

| SEAL EXPANSION CAPACITIES FOR ALUMINATOR & PROSEAL DRAINS | | | | |
|---|-----------------------------|-------------------|------------------------------------|------------|
| DRAIN SIZE | STARTING OD OF SEAL/ OUTLET | FITS INTO PIPE ID | MAXIMUM EXPANSION DIAMETER OF SEAL | ID OF SEAL |
| 3" | 2.85" | 2 7/8" - 3 1/4" | 3.40" | 2.19" |
| 4" | 3.80" | 3 7/8" - 4 1/4" | 4.40" | 3.12" |
| 5" | 4.80" | 4 7/8" - 5 1/4" | 5.40" | 4.15" |
| 6" | 5.70" | 5 7/8" - 6 1/4" | 6.40" | 5" |

SPECIFICATIONS:

MATERIAL: ALUMINUM
TYPE: RETROFIT
BODY: HEAVY GAUGE SPUN ALUMINUM
FLANGE DIAMETER: 16"
DRAIN OUTLET LENGTH: 12"
CLAMPING RING: 10" ALUMINUM
STRAINER: 10" ALUMINUM

| FLOW CAPACITY | |
|---------------|-----|
| SIZE | GPM |
| 3" | 45 |
| 4" | 85 |
| 5" | 180 |
| 6" | 210 |

ABOVE DRAINS WERE ABLE TO PERFORM AT THE PEAK RATES WITH A HEAD OF WATER OF 3 1/4" OR LESS

NOTES:

1. INSTALLATION TO BE COMPLETED IN ACCORDANCE WITH MANUFACTURER'S SPECIFICATIONS.
2. DO NOT SCALE DRAWING.
3. THIS DRAWING IS INTENDED FOR USE BY ARCHITECTS, ENGINEERS, CONTRACTORS, CONSULTANTS AND DESIGN PROFESSIONALS FOR PLANNING PURPOSES ONLY. THIS DRAWING MAY NOT BE USED FOR CONSTRUCTION.
4. ALL INFORMATION CONTAINED HEREIN WAS CURRENT AT THE TIME OF DEVELOPMENT BUT MUST BE REVIEWED AND APPROVED BY THE PRODUCT MANUFACTURER TO BE CONSIDERED ACCURATE.
5. CONTRACTOR'S NOTE: FOR PRODUCT AND COMPANY INFORMATION VISIT www.CADdetails.com/info AND ENTER REFERENCE NUMBER 5355-001.

