



# LOMANCO OMNIROLL® OR-20 INSTALLATION INSTRUCTIONS



Thank you for your purchase of the Lomanco OmniRoll® Shingle Over Ridge Vent. The Lomanco OmniRoll® is an exhaust vent that will help rid your attic of damaging heat and moisture when properly installed and used in conjunction with Lomanco intake vents (always make sure intake vents are clear of insulation and other obstructions).

**NOTE:** Most codes concerning residential attic ventilation require a balanced system of 50% exhaust ventilation and 50% intake ventilation. When this balanced system is used, the Lomanco OmniRoll® will meet or exceed residential attic ventilation codes.

**IMPORTANT** Read ALL instructions thoroughly before attempting to install the OmniRoll® vent.

The OmniRoll® vent will look better if it extends the entire length of the roof and therefore blends in with the roof line. Measure the length of the roof peak to determine the total length of OmniRoll® vent needed.

**NOTE: DO NOT CUT THE VENTILATION SLOT THE ENTIRE LENGTH OF THE RIDGE. THE LENGTH OF THE CUT WILL BE ONE (1) FOOT LESS THAN THE LENGTH BETWEEN THE END WALLS (SEE FIGURE 3).**

**STEP 1** - Remove the cap shingles the entire length of the ridge if the house already has shingles. Do not install cap shingles on new construction.

**STEP 2** - The width of the slot will depend on whether your home is built with "Truss Construction" (1¾" wide slot) or "Ridgepole Construction" (3¼" wide slot). If you are not sure, look into the attic and compare the ridge construction to Figures 1 and 2.

The length of the slot should end 6 inches inside each end wall as shown in Figure 3. Mark the width to be cut with a chalk line (for a straighter cut) and also mark the end of the slot. The slot is best cut with a circular saw taking care to set the depth of the cut to avoid cutting any rafters. Cut the slot and remove the cut decking.

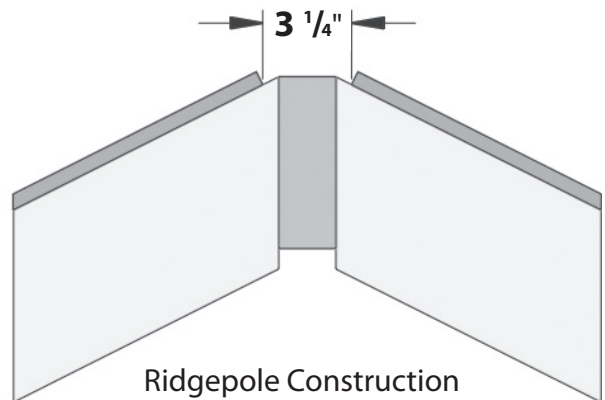


Figure 2

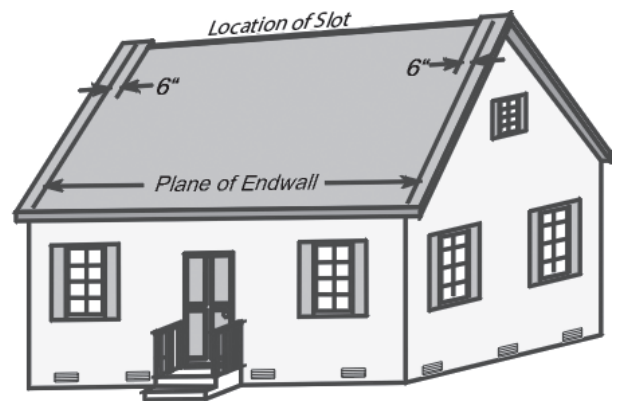


Figure 3

21650\_0115

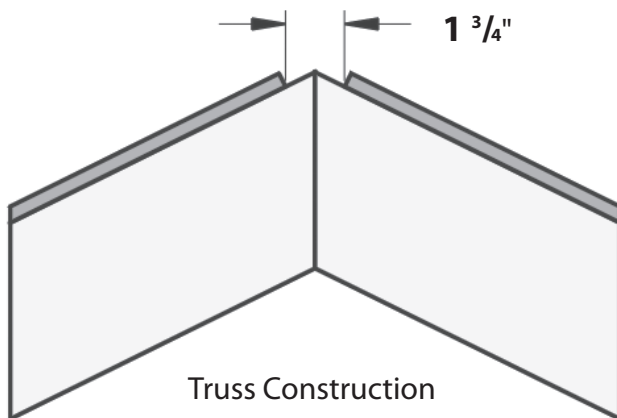
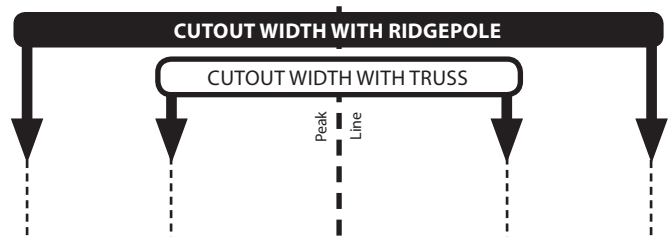


Figure 1

Center cutout gauge on roof's peak line and mark correct cutout width. | Center cutout gauge on roof's peak line and mark correct cutout width.



Find us on Facebook

Subscribe on YouTube

1.800.643.5596 • Lomanco, Inc. • lomanco.com

## LOMANCO OMNIROLL® OR-20 INSTALLATION INSTRUCTIONS

**STEP 3** - It is very important that the OmniRoll® ridge vent be aligned correctly and evenly down the roof's ridge. Snap a chalk line down both sides of the ridge at a distance of 7" down from the peak as shown in Figure 4. The chalk lines should be used to help keep the OmniRoll® centered over the peak of the roof during installation.

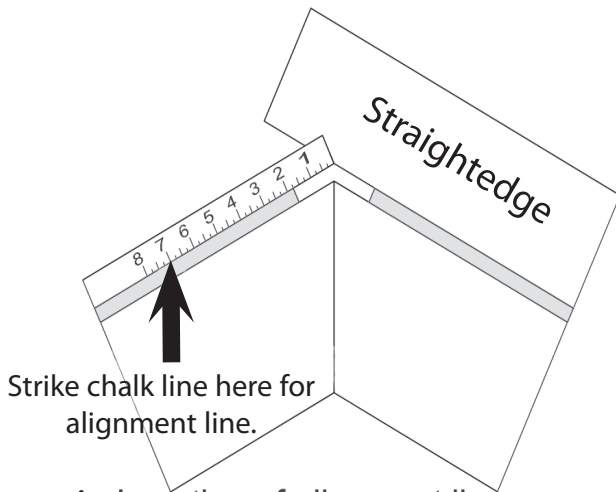


Figure 4 Location of alignment line.

**STEP 4** - If an entire 20 foot roll is to be used, unroll a section of OmniRoll® and center the length of ridge vent evenly between the chalk lines previously snapped. Supported nail holes are provided approximately every foot. Nail the end of the vent first, then proceed nailing down the ridge using the remaining nail holes. Ring shank or spiral nails are recommended. The recommended nail length is two and one-half inches (2½").

Cut lines are provided on the top of the OmniRoll®. Cut between the lines at "CUT LINE A" (Figure 5) when ending an installation. Before using the remaining portion, cut at "B" (Figure 6). This will insure that an endplug is at the beginning and end of every installation.

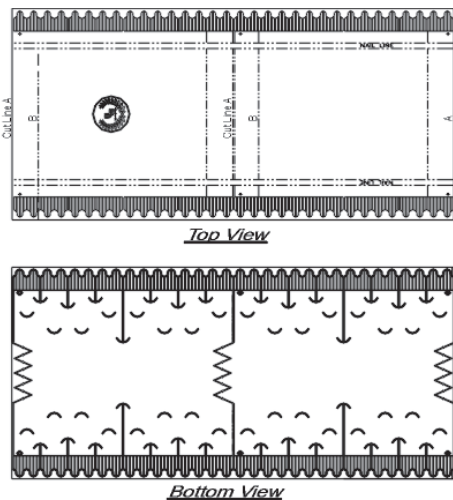
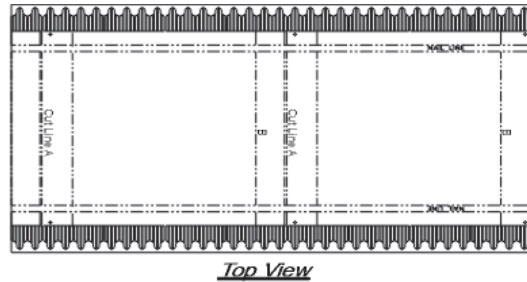
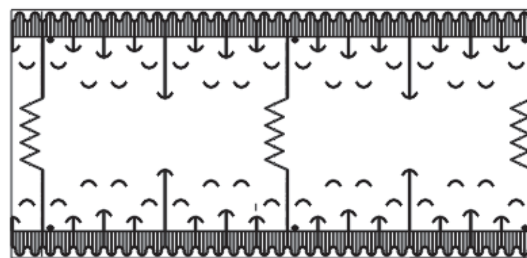


Figure 5

Additional accessories are not needed because of the unique, patented pre-molded internal end plugs located every linear foot. If either cut line is used, an end plug will be at the end of every cut section. Place each new section next to the previous section and nail as before.



Top View



Bottom View

Figure 6

**STEP 5** - Install new cap shingles on top of the OmniRoll® vent and nail through the vent. A nail line has been provided to assist you.

### LIFETIME LIMITED WARRANTY

Lomanco, Inc., warrants to you, the original owner of the Lomanco OmniRoll®, when installed in conjunction with new shingles and in strict accordance with Lomanco's written installation instructions, the Lomanco OmniRoll® is free from manufacturing defects for the lifetime of the original owner, or for a shorter period of time equal to the warranty period of the new shingles. This warranty may be transferred by the original purchaser to a new homeowner. The warranty will then cover a period of 50 years from the original installation date or the warranty period of the shingles, whichever is shorter. This warranty does not cover damage of any kind resulting from improper application, improper installation, fire, flood, earthquake, storm, tornado, or other acts of God. Lomanco's lifetime warranty is expressly limited to the owner of a single family residence at the time of initial installation. This warranty will be limited to 50 years or the warranty period of the shingles, whichever is shorter, for installations on buildings other than single family residences. Should any manufacturing defect occur during the warranty period, Lomanco, Inc., at its sole discretion, will either (a) provide replacement part(s) for that portion of the product deemed to be defective (not to include labor costs incurred in removing the defective part(s) or installing the replacement part(s)), or (b) if Lomanco, Inc. is unable to provide replacement part(s) within a reasonable time, or at the consumer's discretion, refund the consumer for the defective part(s) in an amount equal to the sum of the actual purchase price of the defective part(s).

## THREE MUST DO Steps to attic ventilation

- 1 Install all Exhaust Ventilation at the SAME HEIGHT within a common attic area.**  
Installation of exhaust vents at more than one level on a roof allows the upper exhaust vent to pull air in from lower exhaust vents rather than from the intake vents. Intake air must come from intake vents located near the lower part of the attic space to properly ventilate the total attic area and eliminate weather infiltration.
- 2 Install ONLY ONE TYPE of Exhaust Ventilation within a common attic area.**  
Exhaust Vents pull air from the easiest intake source. Vent types cannot be mixed. The use of different types of exhaust vents could make one of the vents act as intake for the other. Intake air must come from intake vents located near the lower part of the attic space to properly ventilate the total attic area and eliminate weather infiltration.
- 3 Install a BALANCED SYSTEM of Intake and Exhaust Ventilation.**

**50% Intake Ventilation** - Intake vents located near the lower part of the attic area are required to balance out your ventilation system.  
**50% Exhaust Ventilation** - Use a Lomanco Ventilation Selector Guide, or the calculators at [lomanco.com](http://lomanco.com) to determine the number of vents needed to properly ventilate an attic to meet the Ventilation Minimum Property Standard.

21650\_0115