

# **TranzSporter**

## **Owners Manual**

# **LH400**

**(Lift Hoist 400)**

## **Platform Hoist**

**This Hoist is Equipped with a  
“Quick Change” Cable Drum  
Effective: 3/18/2011**



Instructions #08102

**TIE DOWN ENGINEERING • 255 Villanova Drive SW • Atlanta, GA 30336  
www.tiedown.com (404) 344-0000 Fax (404) 349-0401**



031811E1055

# **Congratulations on your Purchase of the TranzSporter Lift Hoist.**

**The TranzSporter Lift Hoist was designed to last.**

## **Features include...**

- Unitized Design - Fewer parts, stronger, less maintenance
- Non-Slip Carriage Deck - Safer operation
- Heavy Duty Steel Frame - Absorbs more punishment
- Spring Loaded Safety Latch - Keeps deck in place when transporting or when operator is away from the hoist.
- Dual Brake System - Better control, longer brake life
- Hi-Impact Nylon Belt Guard - Safer operation
- Oven baked, Black Powder Coat Finish - Durable, long lasting
- Wide Foot Plate - Better control of lift operation
- Permanent Safety Information - Combination of stamped-in safety information and decal's remind your operator to use hoist in a safe manner
- Large Steel Foot Pads - Adds more stability, lasts longer
- Extended Brake Handle - Keeps operator away from hoist when raising or lowering materials

## **User Responsibilities**

### **PERFORM THE FOLLOWING AT THE START AND END OF THE WORK DAY AND AFTER 4 HOURS OF OPERATION DURING THE DAY:**

- Check oil level in engine and fill according to manufacturer's specifications.
- Check cable for smooth operation and for signs of wear.
- Check for loose bolts and tighten according to specifications.
- Check track sections and all other moving parts for excessive wear or fatigue.
- Check general condition of equipment.
- Check operator's understanding of the proper operation for this equipment.
- Check extension cords and connections for wear or damage.
- Check brake parts regularly for wear or damage.
- Check Cable Drum Bearings - they should run smoothly when brake is released. If there is any noise or if the cable drum does not spin freely, replace immediately.

**WARNING: DO NOT OPERATE THIS EQUIPMENT IF ANY UNSAFE CONDITIONS EXIST OR OCCUR DURING OPERATION.**

**Remember: Safety First!!**

## REPAIR INFORMATION

Your LH-Series platform hoist is designed to provide years of service, however, when your LH-Series hoist requires parts, service or repairs, please contact your nearest authorized dealer, or call 1-800-241-1806, ext. 329 for information on where to take your platform hoist.

### WARNING:

- **KEEP TRACK SECTION CLEAR OF ALL ELECTRICAL WIRES AND EQUIPMENT**
- **BE AWARE OF OVERHEAD OBJECTS**
- **NEVER USE HOIST AS A LADDER**
- **NEVER OPERATE HOIST WITH A HUMAN ON PLATFORM**
- **NEVER STAND UNDER PLATFORM WHEN LOWERING**
- **NEVER USE INDOORS OR IN AN AREA WITH POOR VENTILATION**

### PLEASE READ!

The equipment described herein has been engineered to perform specific lifting tasks, with a minimum of risk to the operator. The instructions for operation and safety contained herein were designed to help insure that this equipment, performs its function, as stated without adding to the endangerment of persons, equipment, and/or materials.

#### LH400 - Series Specifications:

##### 400 lb. MAXIMUM Hoisting Capacity

LH - Series- gasoline power unit - (4 hp. Lifan, 4 hp. Honda or High Torque Electric Motor)

Self-energizing brake, 3 ft. steel base section, 4, 8, and 16 ft. track sections.

# **TranzSporter**

## **Limited Warranty for all models**

### **Replaces all dated or undated limited warranties dated before May 1, 2001**

Tie Down Engineering, Inc. will repair or replace, free of charge, any part, or parts of the TranzSporter lift hoist that are defective in material or workmanship or both. The limited warranty is in effect for 90 days from date of purchase. Return the defective unit to the dealer or contact Tie Down direct at 800-241-1806, x329.

THERE IS NO OTHER EXPRESS WARRANTY IMPLIED WARRANTIES INCLUDING THOSE OF MERCHANTABILITY AND FITNESS FOR A PARTICULAR PURPOSE ARE LIMITED TO ONE YEAR FROM PURCHASE OR TO THE EXTENT PERMITTED BY LAW AND ALL IMPLIED WARRANTIES ARE EXCLUDED TO THE EXTENT EXCLUSION IS PERMITTED BY LAW. Some countries or states do not allow limitation on how long an implied warranty lasts and some countries or states do not allow the exclusion or limitation of incidental or consequential damages so the above limitation and exclusion may not apply to you. This warranty gives you specific legal rights and you may also have other rights which vary from country to country and state to state.

**TIE DOWN ENGINEERING • 255 Villanova Drive SW • Atlanta, GA 30336**  
**www.tiedown.com (404) 344-0000 Fax (404) 349-0401**



# Safety instructions

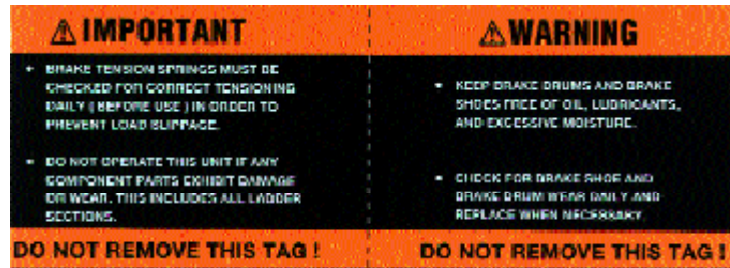
**CAUTION:** Please read the safety warnings and Instructions contained in this manual before operating the lift hoist. Failure to obey the warnings contained herein could result in personal injury or damage to the equipment; however, this information should not be a substitute for routine accident prevention, but rather an addition to routine accident prevention.

## GENERAL SAFETY INSTRUCTIONS:

1. Transport and handle your lift hoist with care.
2. Unpack the TranzSporter carefully and inspect for any damage that may occur during transportation. **DO NOT USE THE HOIST IF ANY PART IS DAMAGED**
3. Please observe all safety and warning labels attached to the hoist.
4. Use only replacement parts furnished by the manufacturer.
5. Always keep the area around the base section of the TranzSporter hoist clear to help prevent slipping, tripping or falling against the hoist.
6. **DO NOT ALLOW ANYONE TO OPERATE THE TRANZSPORTER HOIST WHO HAS NOT BEEN THOROUGHLY AND PROPERLY TRAINED IN THE CORRECT OPERATION AND USE OF THIS HOIST.**
7. This hoist is manufactured to lift materials only. Do not use the lift hoist for the purpose of transporting personnel from one level to another.
8. Do not climb the lift hoist or use as a personnel ladder.
9. Do not overload - maximum lifting capacity for the LH400 is 400 lbs. with a load capacity of 380 lbs.
10. Keep hands, feet and other body parts as well as clothing away from the track sections and moving or rotating parts of the lift hoist when starting the engine or when operating the hoist.
11. Do not allow any persons to walk or work under or near the lift hoist while in operation.
12. Do not use this hoist to transport hot asphalt or any other hot molten substance from one elevation to another.
13. Store all parts of the lift hoist in such a fashion as not to damage any of the components.
14. Do not operate indoors or in an area with poor ventilation.

## Remember: Safety First!!

Warning labels are attached to the LH400 and are weather resistant. If you notice any of these decal's missing from your hoist, please contact TIE DOWN ENGINEERING for a replacement label.

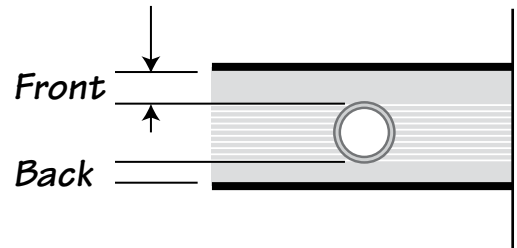


# Assembly Instructions LH400 Hoist

Congratulations on purchasing the TranzSporter LH400 Platform hoist. The two boxes contain the five assembled parts plus the owner's manual, making up the LH400. Please read the following instructions completely before starting assembly. Refer to the owner's manual for further information on use and maintenance of the LH400.

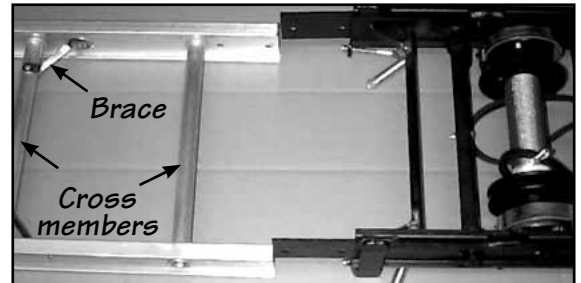
Parts found in the two boxes are:

- Track section base
- Carriage assembly
- End cap
- Motor base
- Brake handles or optional Dual Operation Handle
- Owner's manual



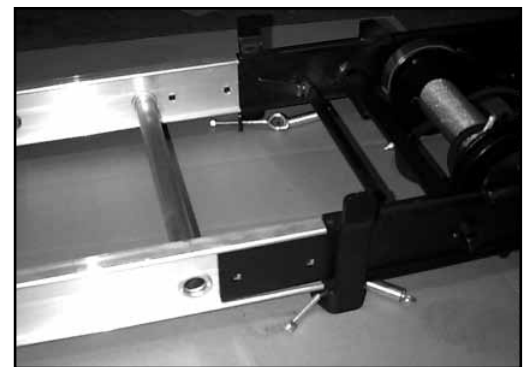
Picture 1

1. Remove all hoist parts from the two boxes and place on a clean floor or assembly area. Lay one track section on a flat floor with the "front" side up. This is determined by the space between the track cross bar and the track section edge as shown in picture 1.



Picture 2

2. Remove slice plates from the track section. Attach the track base to the bottom of the track section using four 3/8" x 3/4" hex head bolts provided or the bolts used in attaching the splice plates. Note, the track base mounts to the outside of the track section as shown in picture 3. The bottom of the track section is determined by making sure the braces are below the cross bars as shown in picture 2. Make sure that hex head bolts are installed from the outside so that lock nuts are to the inside of track sections.

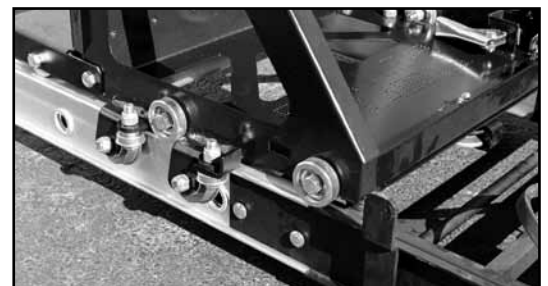


Picture 3

3. Starting at the top of the track section slide carriage assembly onto track section so that the four rollers connect to the top rail of the track section as shown in picture 5. "Roll" carriage assembly to the base.

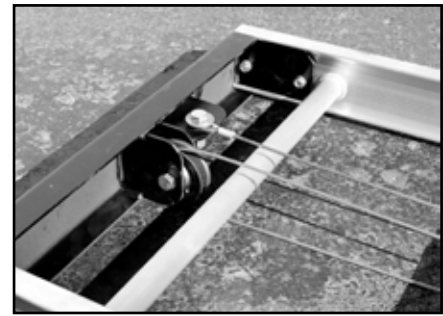


Picture 5



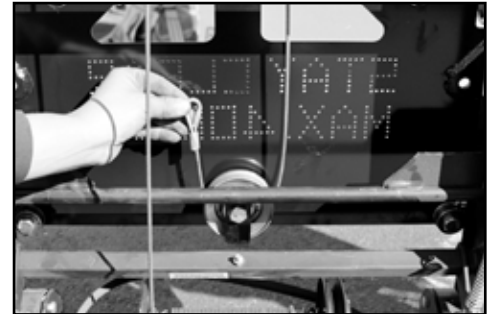
4. Attach the track sections you will be using with the bolts and splice plates provided with the track sections. Make sure that splice plates are to the inside of the track section.

5. The end cap is bolted to the top end of the last section of track section you intend to use. Assemble as shown in picture 6 using four 3/8" x 3/4" hex head bolts with lock nuts provided. Make sure that the top cap end slides into the inside of the track section.



Picture 6

6. From the back side of the hoist, remove the end of the cable from the drum. It helps to attach the brake handle, pulling back releases the brake drum. The cable will then easily unspool. Staying on the outside of the base section and track section, take the cable to the top of the last track section where the top cap pulley is attached. Feed the cable end through the pulley as shown in picture 7, and down the front side of the track section to the back of the carriage assembly. Feed cable through the cable retainer assembly (picture 8) attached to the carriage assembly, take the cable to the top cap assembly and bolt it as shown in picture #9.



Picture 8



Picture 7

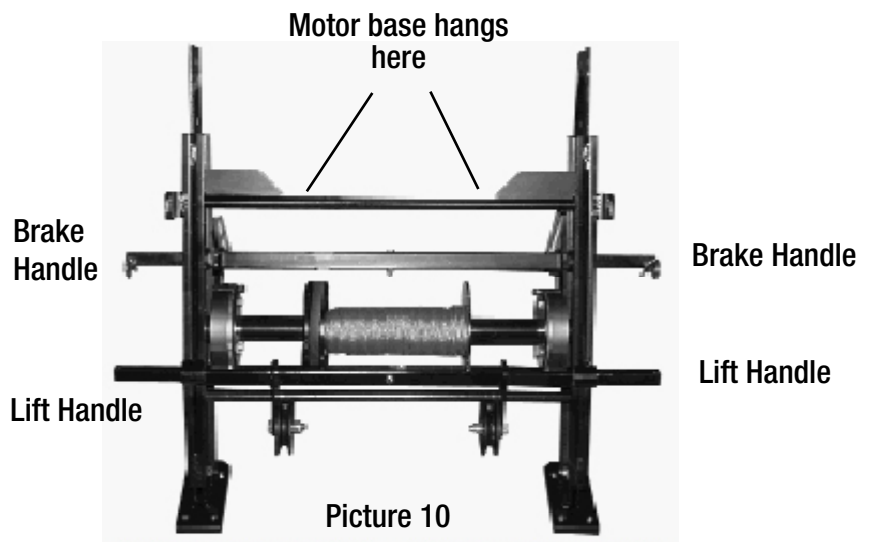


Picture 9

7. At this time make sure that you have read the owner's manual for information on proper set up. Make sure the hoist is secured to the building and proper bracing and space from the building is used according to the guidelines provided in the owner's manual.

8. After the track section with base is properly secured to the work site and properly braced, the motor assembly can be attached to the base unit. The foot pad of the motor base slides under the track base section, while "hanging" the motor base as shown in picture 10.

9. The LH400 brake and lift handles work on either side for operating convenience.



Picture 10



10. Attach the “V” belt to the large pulley (next to cable drum assembly on track section base), then to the small pulley on the motor base (Shown left).

11. The handle is attached to the brake release bar, aligning the holes for the insertion of the pin provided.



12. If needed, attach the two plywood/rolled goods brackets with the nuts and bolts provided (Shown left).

## **GASOLINE POWER UNIT**

1. Handle fuel with care. It is **EXTREMELY** flammable and explosive under certain conditions.
2. Do not smoke, allow open flames or sparks to be present during the refueling operation.
3. Use only an approved fuel container to transport fuel.
4. Do not fuel while engine is hot - allow to cool before attempting the refueling operation.
5. Replace all fuel tank caps securely and wipe the spilled fuel before restarting engine.
6. Do not operate the lift hoist gasoline engine in an enclosed area. The exhaust can be especially hazardous in an enclosed area.
7. Stop the engine and lower the platform when leaving the vicinity of the lift hoist.
8. Always stop the engine, lower the platform, wait for all moving parts to stop, and allow the engine to cool before disassembling or moving the hoist.
9. Disconnect the spark plug wire from the plug before disassembling or moving the hoist.
10. **DO NOT** store the engine in an enclosed area.
11. Allow engine to cool before storing.
12. **DO NOT** store engine where it might be subjected to flames, sparks, extreme heat or any other source of combustion.

# Raising the Track Section Assembly

## **WARNING: KEEP TRACK SECTIONS CLEAR OF ALL ELECTRICAL WIRES AND EQUIPMENT BE AWARE OF OVERHEAD OBJECTS-NEVER CLIMB HOIST!**

The hoist assembly is extremely top heavy and must be kept under control at all times.

Two alternate methods are suggested for raising the platform hoist to the operating position.

### **PROCEDURE "A"**

This procedure requires two or preferably three men.

1. Lay the assembled track sections with the platform attached parallel to the building wall that is to support the hoist.
2. Tie a rope to the head bracket and have the man on roof pull up the hoist while the other man on the ground braces the shoes on the bottom section to prevent slippage of the hoist shoes. The third man on the ground may aid in erecting by "walking" the hoist up hand over hand by the rungs.
3. When the hoist reaches a vertical position, carefully turn the hoist 90 degrees with the platform pointing away from the building. Move the bottom of the hoist away from the building, 1/4 of the height of the building where the top of the hoist is to be supported. Make allowances for overhang. See track section support chart for approximate distances of the base from the bottom track.

### **ALTERNATE PROCEDURE "B"**

1. Place track section assembly perpendicular to the building with the bottom shoes of the steel bottom section resting against the building to prevent slipping.
2. Tie a rope to the head bracket and have the man on the roof pull up the hoist while the other man on the ground braces the shoes on the steel bottom section to prevent slippage of the hoist shoes. The third man on the ground may aid in erecting by "walking" the hoist up hand over hand by the rungs.
3. When the hoist reaches a vertical position, carefully turn the hoist 180 degrees with the platform pointing away from the building. Move the bottom of the hoist away from the building, 1/4 of the height of the building where the top of the hoist is to be supported. Angle of track sections from building should be between 18 and 20 degrees. Make allowances for an overhang. See Track Section Chart for approximate distances of the base from the building.

### **AFTER ERECTING THE HOIST USING PROCEDURE "A" OR "B", CONTINUE AS FOLLOWS:**

4. Tie the track section to the roof with a rope fastened to a cross tie on the top bracket to prevent slippage of the track section. **DO NOT TIE ROPE TO THE RAILS - THIS WILL PREVENT THE PLATFORM FROM OPERATING PROPERLY.**
5. Mount the power unit to the top rung of the steel bottom section. Attach the V-belt to the pulley on the power unit. Slide the brake handle over the brake arm and install the pin provided.
6. Remove any ropes used to secure the platform during transportation.
7. Make certain the shoes on the steel bottom section are firmly resting on level ground. This will help to prevent track section slippage or uneven loading of the track section which could cause damage or injury to personnel and/or to equipment.



## Lowering the Track Section Assembly

**WARNING: BEFORE LOWERING THE TRACK SECTIONS, CAREFULLY CHECK FOR OVERHEAD OBJECTS AND POWER LINES.**

## Raising the platform with or without load

**WARNING: THE OPERATOR OF THIS HOIST UNIT SHOULD WEAR APPROPRIATE SAFETY EQUIPMENT WHICH SHOULD INCLUDE APPROVED HAND PROTECTION, HEAD PROTECTION AND EYE PROTECTION.**

To raise the platform on LH400, face the platform and stand as far as possible from the hoist to operate. Place your foot on the foot control brace to engage the motor to drum belt, permitting the platform to roll up the track section. When the platform reaches the top, release foot IMMEDIATELY. This will apply the self energizing brake. Move away from the hoist while the load is being removed from the platform.

## Lowering the platform

To lower the carriage, stand to the right or left side of the hoist and grasp the brake handle. Lightly feather the platform down by engaging and disengaging the brake to slow the carriage. Lower the carriage to the ground at a slow speed (not to exceed 50/feet per minute). Continue to decelerate the platform as it nears the ground to prevent damage to the platform or bottom brace stops.

**CAUTION: NEVER APPLY THE BRAKE ABRUPTLY - BROKEN HOIST CABLES AND/OR SEVERE INJURY TO PERSONNEL OR EQUIPMENT MAY OCCUR. MAKE CERTAIN PLATFORM DOES NOT STRIKE THE BOTTOM BRACE STOPS UPON REACHING THE BOTTOM OF THE TRACK SECTION.**

Lower and dismantle the platform hoist assembly in the reverse of the erection procedure, observing all safety procedures.

## Track Section Chart - Brace Support

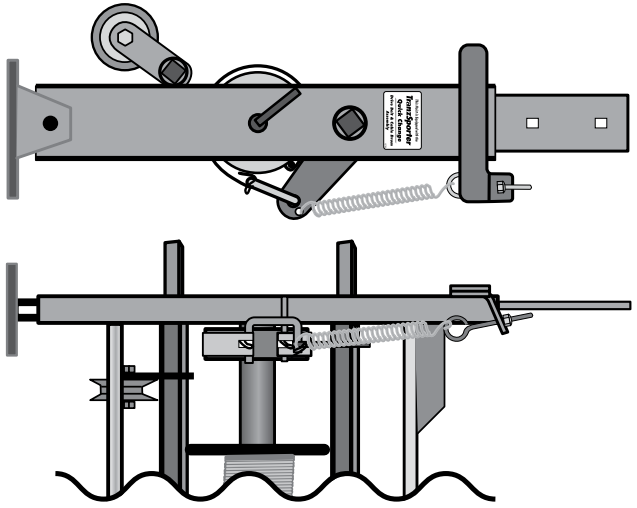
Track lengths in excess of 28 feet require the use of the telescoping brace(#60005). The table below provides the suggested information for the distance of the bottom track from the building and the location of the track support for various conditions.

<b>Building Height</b>	<b>Length of Track</b>	<b>Base of Track to Building</b>	<b>Track Brace Location Cross Tie from Bottom</b>
42	44(max)	10'6"	25th and 27th
40	44	10'0"	26th and 25th
36	40	9'0"	19th and 21st
32	36	8'0"	14th and 16th
28	32	7'6"	11th and 13th
24	28	6'6"	Not Required
20	24	6'6"	Not Required
16	20	5'0"	Not Required
12	16	4'6"	Not Required

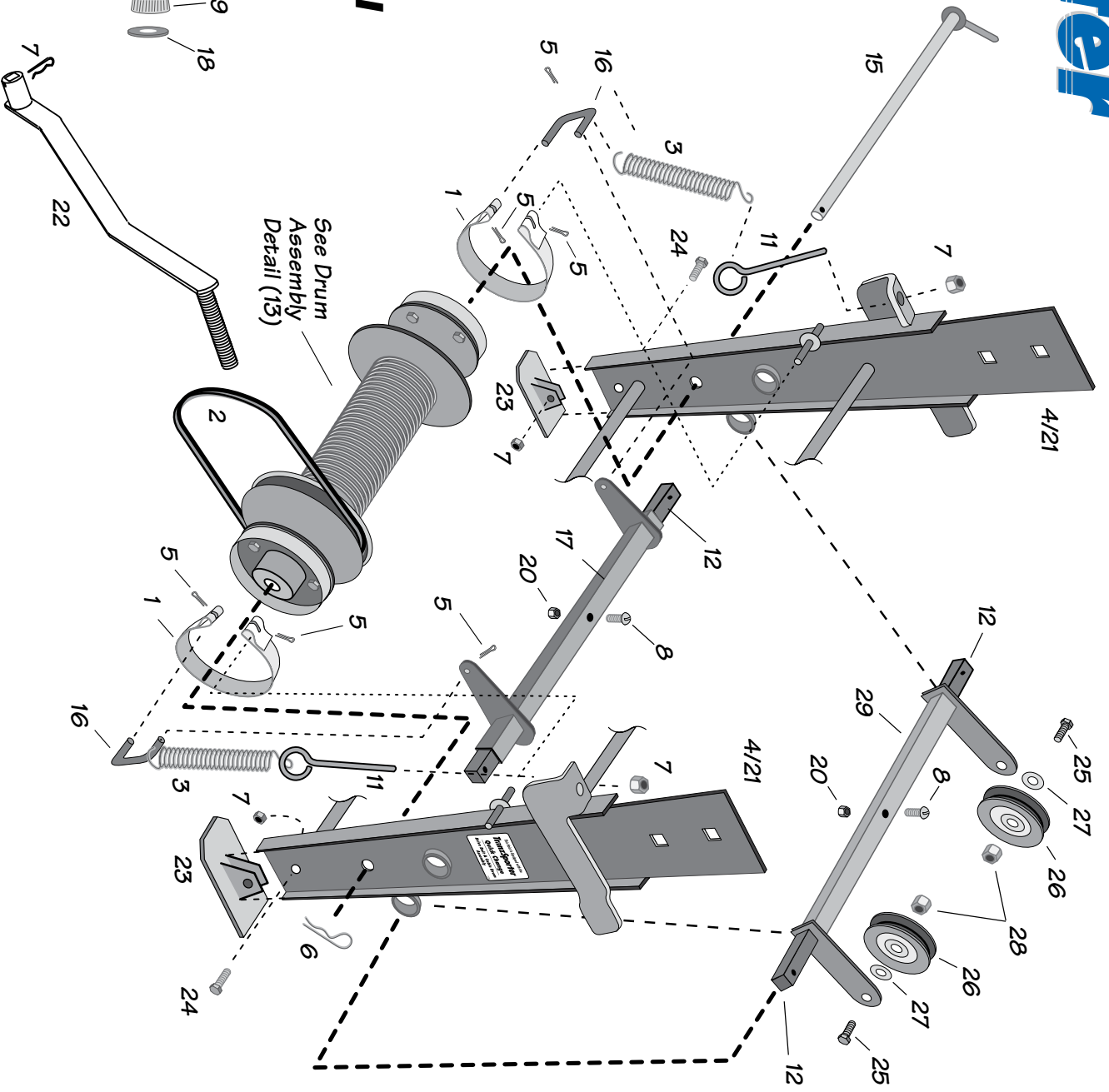
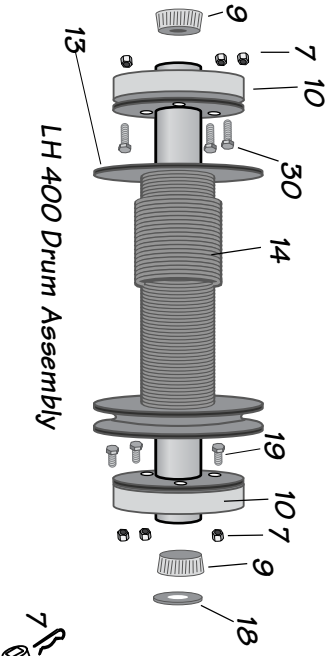
# TanzSporter LH400 Base Parts Detail List

Number	Kit Part #	TDE Part #	Description	Kit Contains (Quantity-Part #)
1	90027	10033	10033 Strap Brake	1-10033, 1-10041, 2-10603, 1-48510, 1-13203, 1-10650
2	10047	10047	Bolt B 5/16" (5/1510) formerly #10034 50"	
3	90027	10041	Spring Brake	1-10033, 1-10041, 2-10603, 1-48510, 1-13203, 1-10650
4	48521	48521	Platform Base with Safety Shoes	
5	90027	10603	10603 Cotter Pin 3/32"x1/2"	1-10033, 1-10041, 2-10603, 1-48510, 1-13203, 1-10650
6	90008	10604	10604 Cotter Pin Hair 111-20	2-10604
7	90027 or see 90011	10650	10650 Nyloc Hex Nut 5/16"	1-10033, 1-10041, 2-10603, 1-48510, 1-13203, 1-10650
8	90003	10946	10946 Bolt HHCS 1/4-20	1-10946, 1-10027
9	90009	11080	11080 Bearing 1.375 x 5/8" x 1/2"	2-10080
10	13000	13000	13000 Drum Brake 4"	
11	90027	13203	13211 Eye Bolt 5/16" x 3" zinc	1-10033, 1-10041, 2-10603, 1-48510, 1-13203, 1-10650
12	48523	48523	Brake Control Shaft	
13	48491A	48491B	Quick Change Cable Drum with 130' cable (complete)	
14	90034	50384	Cable 3/16" x 130'	1-50384
15	48525	48525	Cable Drum Shaft	
16	90027	48510	48510 Brake Linkage	1-10033, 1-10041, 2-10603, 1-48510, 1-13203, 1-10650
17	48524	48524	Brake Control Weldment	
18	90012	48517	48517 Cable Drum Shim	2-48517
19	10518	10518	Bolt 5/16" x 3/4"	
20	90003	10027	1/4" Nut	1-10946, 1-10027
21	64003	64003	Complete 3' Platform Base	
22	48506A	48506A	Brake Handle with Grip	
23	90011	48511A	Complete Safety Shoe	1-48511A, 1-10953, 1-10650
24	90011	10953	Bolt 5/16" x 1-1/4" HHCS	1-48511A, 1-10953, 1-10650
25	90014	10931	2" x 1/2" Bolt	2-13132, 4-10573, 2-10517, 2-10931, 2-10645
26	90014	13132	Sheave Idler	2-13132, 4-10573, 2-10517, 2-10931, 2-10645
27	90014	10573	Washer 1/2"	2-13132, 4-10573, 2-10517, 2-10931, 2-10645
28	90014	10645	Nyloc Nut	2-13132, 4-10573, 2-10517, 2-10931, 2-10645
29	48530	48530	Lift Control Weldment	
30	10935	10935	Bolt 5/16" x 1"	

031811.e6G41



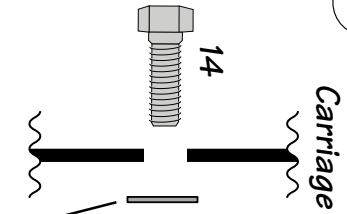
## LH400 Base Section Exploded Parts Detail Rear View



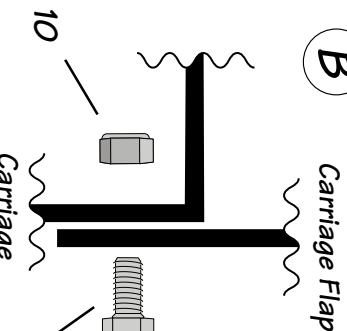
Number	Kit Part #	TDE Part #	Description	Kit Contains (Quantity-Part #)
1	48520	48520	Carriage Frame	
2	48527	48527	Carriage Flap	
3	90026 or 90029	48556	Flanged Wheel Complete	See Below for 90026 & 90029
4	90026	48554	Clip Stop	See Below for 90026
5	90026	48536	Guide Wheels	See Below for 90026
6	48548	48548	Cable Retainer	
7	90026 or 90029	11083	Bearing Flange (inside guide bearing)	See Below for 90026 & 90029
8	90026 or 90029	11081	Bearing Flange (outside silver color guide bearing)	See Below for 90026 & 90029
9	90026 or 90029	13132	Sheave Idler pulley	See Below for 90026 & 90029
10	90026	10645	1/2" Nyloc Nut (used on all bolts)	See Below for 90026
11	90026	BBB5000250	2-1/2" x 1/2" Bolt (for Sheave idler pulley)	See Below for 90026
12	90026	10016	1" x 1/2" Bolt (for attaching flap to carriage)	See Below for 90026
13	90026	10931	2" x 1/2" Bolt (For ALL guide wheels and bearing flange guides)	See Below for 90026
14	90026	10806	1-1/2" x 1/2" Bolt (For 48556 Flange Wheels and Flap wheel)	See Below for 90026
15	90026	10517	Washer 1/2" x 3/4"	See Below for 90026
16	90028	48535	Latch Pin	1-10952, 1-10650, 2-17020-5, 1-10054, 1-48535, 1-17020-1, 1-48481-11
17	90026	10573	Washer 1/2"	See Below for 90026
18	90028	10054	Spring Compression 2"	1-10952, 1-10650, 2-17020-5, 1-10054, 1-48535, 1-17020-1, 1-48481-11
19	90028	10650	Nyloc Nut 5/16"	1-10952, 1-10650, 2-17020-5, 1-10054, 1-48535, 1-17020-1, 1-48481-11
20	90028	10952	Bolt 5/16" x 1"	1-10952, 1-10650, 2-17020-5, 1-10054, 1-48535, 1-17020-1, 1-48481-11
21	90026	48519	Spacer	See Below for 90026
22	90028	17020-1	Latch Handle	1-10952, 1-10650, 2-17020-5, 1-10054, 1-48535, 1-17020-1, 1-48481-11
23	90028	48535	Plunger Safety Latch	1-10952, 1-10650, 2-17020-5, 1-10054, 1-48535, 1-17020-1, 1-48481-11
24	90028	17020-5	Latch Wear Plate	1-10952, 1-10650, 2-17020-5, 1-10054, 1-48535, 1-17020-1
	64001	64001	Complete Carriage	

031811,e648

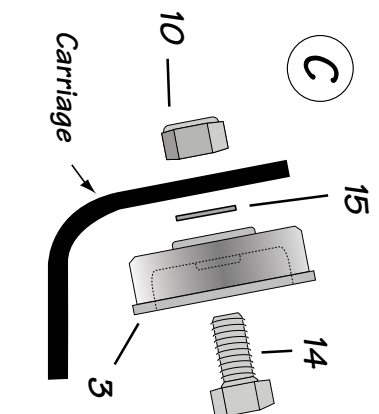
A



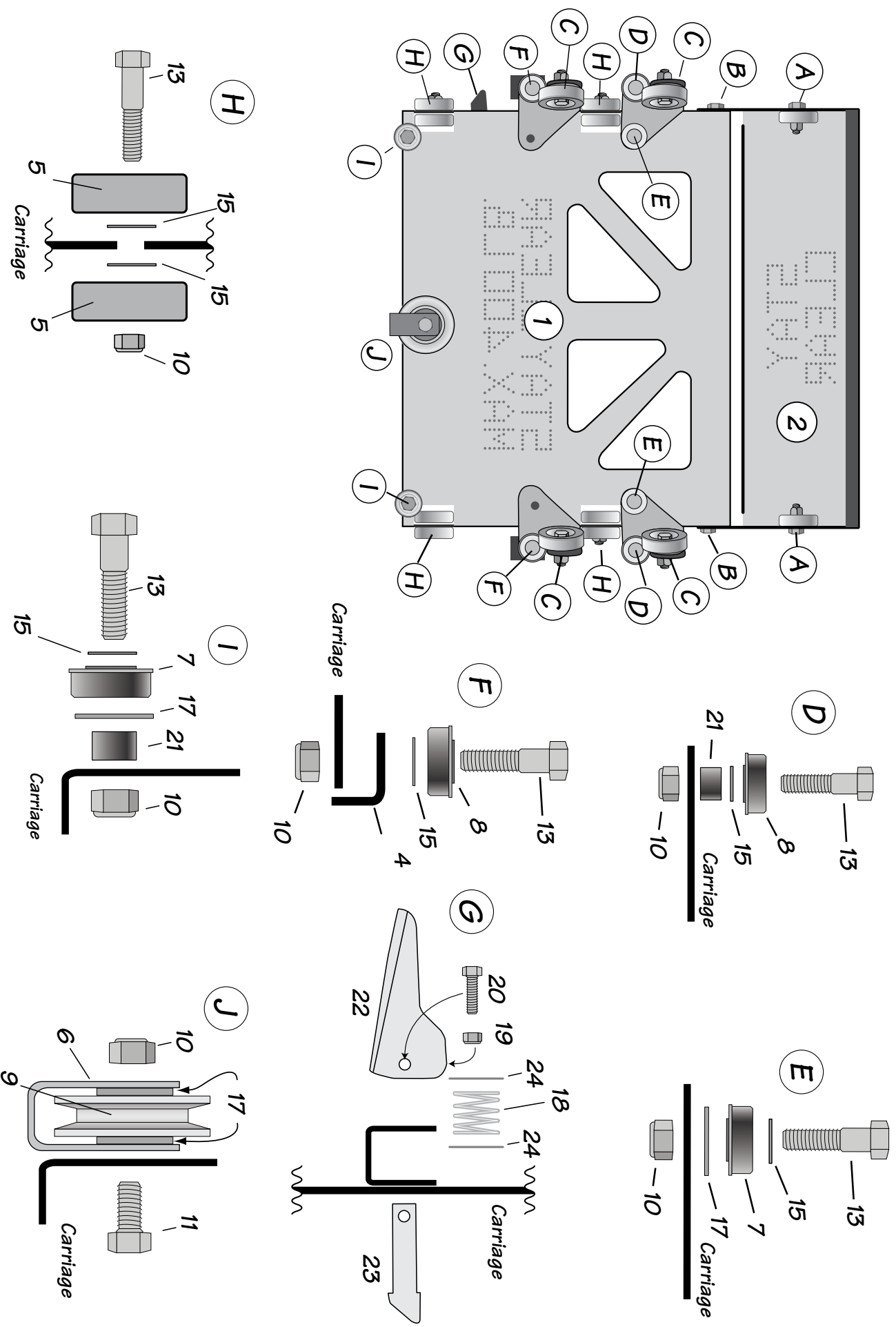
B



C



**Kit Parts:**  
**90026:** 4-11081, 4-11083, 1-13132, 6-10806, 26-10517, 21-10645, 12-10016, 12-10931, 4-48519, 6-10573, 2-48554, 1-bbb5000250, 10-48536, 4-48556  
**90029:** 4-11081, 4-11083, 4-48556, 1-13132"



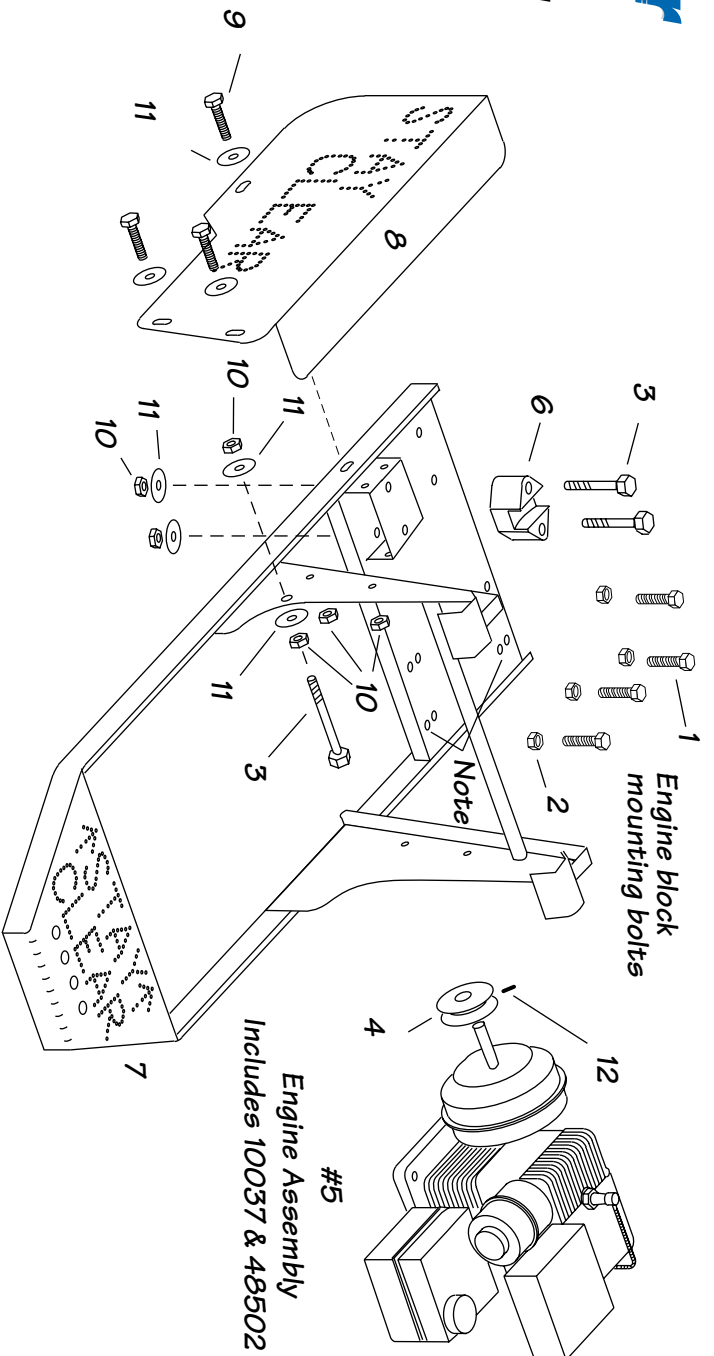
# TranzSporter

## Lifan Motor Mount Assembly Detail

**NEW!**  
Comes with low oil shut off feature



Lifan Engine (5)



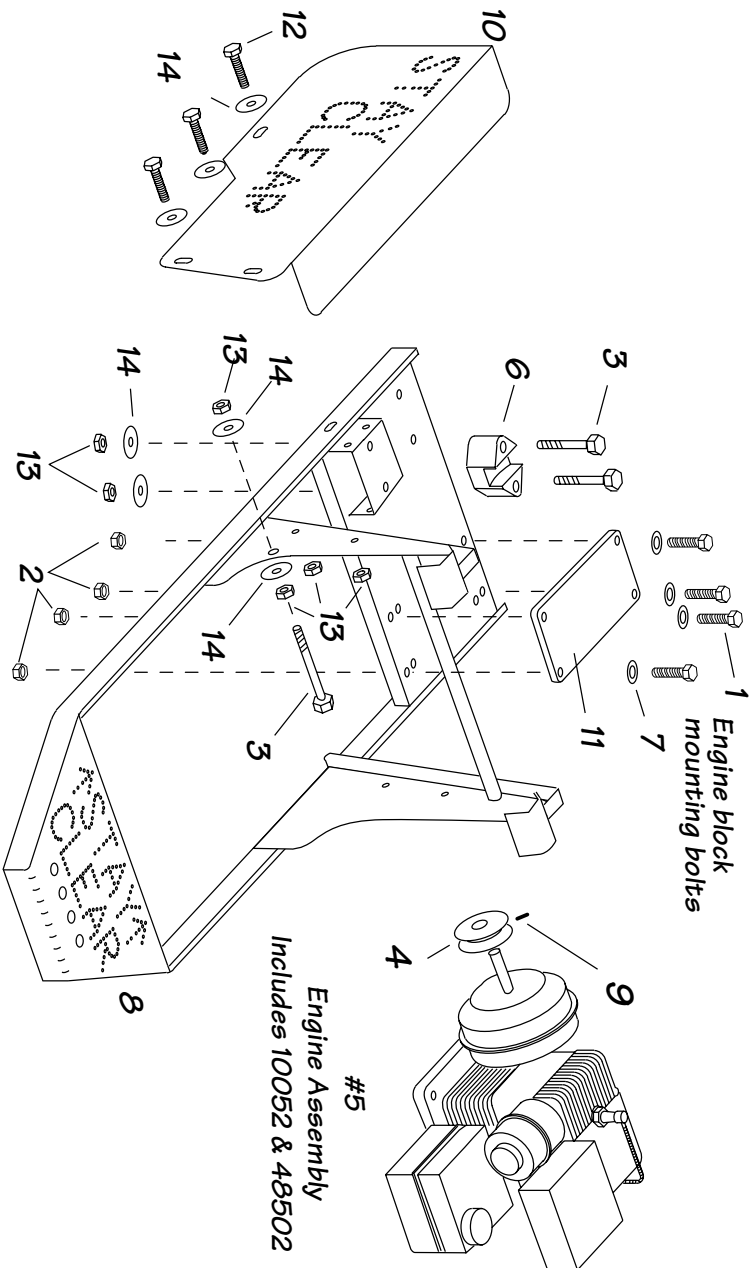
NOTE: Use front hole set for Lifan engine mount

#	Kit Part #	TDE Part #	Description	Kit Contents
1	90021	10954	Bolt 5/16"x1-1/2" Zinc	4-10954, 4-10650
2	90021	10650	Nylloc Hex Nut 5/16"-18	4-10954, 4-10650
3	90019, see also 90020	10026	Bolt 1/4"-20 x 3"	3-10518, 7-10507, 7-10027, 1-48514, 3-10026
4	90022	10037	Sheave for drive motor	1-10037, 1-48502
5	12570A	12570A	Lifan Gas Engine with Low Oil Sensor	
6	90020	45005	Block Pivot Saddle	1-45005, 2-10026, 2-10027, 2-10507
7	48500	48500	Motor Mount Weldment	
8	90019	48514	Belt Guard	3-10518, 7-10507, 7-10027, 1-48514, 3-10026
9	90019	10518	Bolt 1/4" x 3/4"	3-10518, 7-10507, 7-10027, 1-48514, 3-10026
10	90019, see also 90020	10027	Nut 1/4"-20 Zinc	3-10518, 7-10507, 7-10027, 1-48514, 3-10026
11	90019, see also 90020	10507	Flat Washer 1/4"	3-10518, 7-10507, 7-10027, 1-48514, 3-10026
12	90022	48502	Key 3/16"x3/4	1-10037, 1-48502
	48471	48471	Complete Kit: Lifan Engine and weldment	
	48500AA	48500AA	Complete Base Kit without motor	

## Honda Motor Mount Assembly Detail



Honda Engine (5)

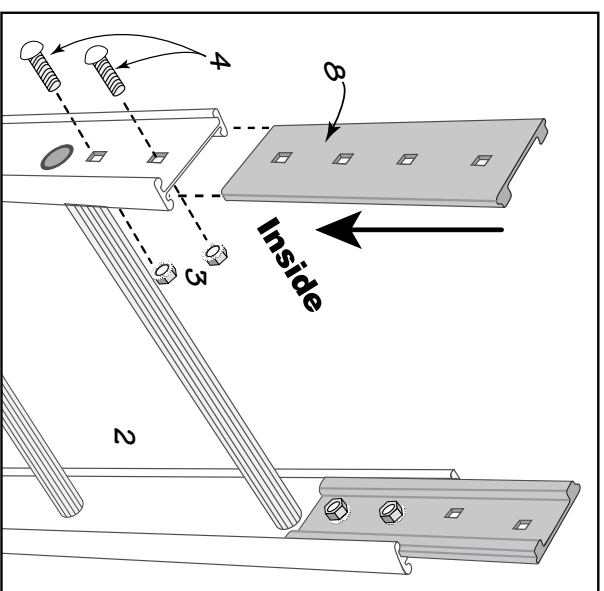
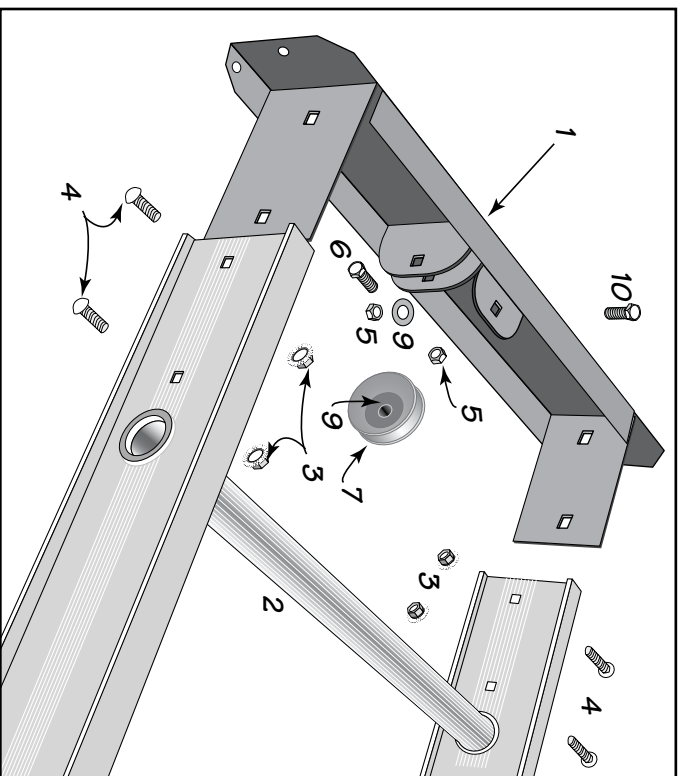


#	Kit Part #	TDE Part #	Description	Kit Contents
1	90023	10955	Bolt 5/16"x1-3/4" Zinc	4-10955, 4-10509, 1-48518, 4-10650
2	90023	10650	Nyloc Hex Nut 5/16"-18	4-10955, 4-10509, 1-48518, 4-10650
3	90019, see also 90020	10026	Bolt 1/4"-20 x 3" Grade 2	3-10518, 7-10507, 7-10027, 1-48514, 3-10026, 1-10037, 1-48502
4	90022	10037	Sheave for Honda drive motor	
5	10039A	10039A	Honda Motor Assembly 4.0 HP	
6	90020	45005	Block Pivot Saddle	1-45005, 2-10026, 2-10027, 2-10507
7	90023	10509	Flat Washer	4-10955, 4-10509, 1-48518, 4-10650
8	48500	48500	Motor Mount Weldment	
9	90022	48502	Key 3/16"x3/4	1-10037, 1-48502
10	90019	48514	Belt Guard	3-10518, 7-10507, 7-10027, 1-48514, 3-10026, 4-10955, 4-10509, 1-48518, 4-10650
11	90023	48518	Honda Mounting Shim	
12	90019	10518	Bolt 1/4" x 3/4"	3-10518, 7-10507, 7-10027, 1-48514, 3-10026, 3-10518, 7-10507, 7-10027, 1-48514, 3-10026, 3-10518, 7-10507, 7-10027, 1-48514, 3-10026,
13	90019, see also 90020	10027	Nut 1/4"-20 Zinc	
14	90019, see also 90020	10507	Flat Washer 1/4"	

032111,E1080

# TranzSporter

## LH400 & LH4000 Track Section Parts Detail



#	Kit Part #	TDE Part #	Description	Kit Contents
1	See 48526A	48526	Top Track Cap	
2	10081	10081	Platform Hoist Track 8' for LH400/LH4000 with pair of splice plates	
3	90024 see also 90025	10622	Nuts Krebs 3/8"	16-10622, 16 10914
4	90024 see also 90025	10914	Bolt Carriage 3/8" x 3/4"	16-10622, 16 10914
5	90014	10645	Nut Nyloc Hex 1/2"	2-13132, 4-10573, 2-10517, 2-10931, 2-10645
6	90014	10931	Bolt HHCS 1/2" x 2"	2-13132, 4-10573, 2-10517, 2-10931, 2-10645
7	90014	13132	Sheave Idler	2-13132, 4-10573, 2-10517, 2-10931, 2-10645
8	90025	10093	Splice Plate w/Hardware (Sold In Pairs)	2-10093, 8-10622, 8-10914
9	12107	12107	Washer Flat 1/2"	
10	10806	10806	Bolt 1/2" x 1-1/2"	
	48526A	48526A	Top Track Cap Complete with Sheave	
	10080	10080	Platform Hoist Track 4' for LH400/LH4000 with pair of splice plates	

031711,e640