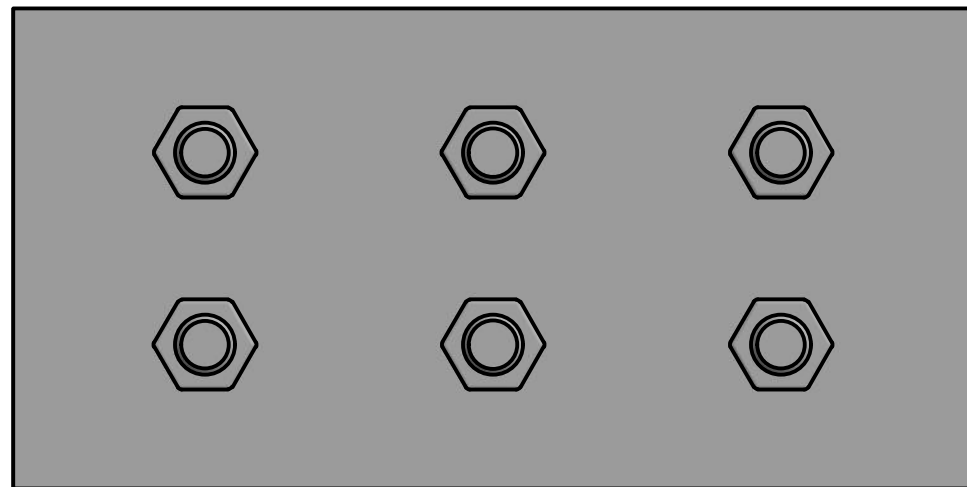
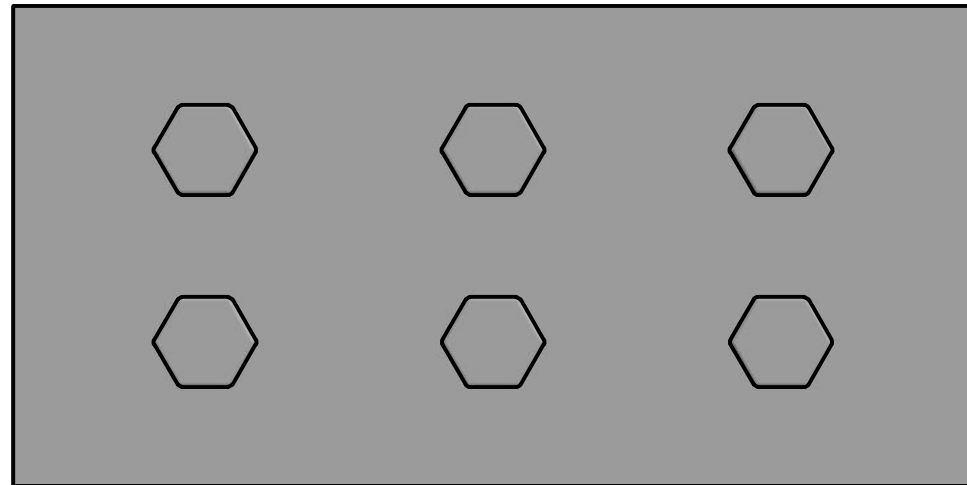


BEAM PLATES

ⓑ




REV	DESCRIPTION	DATE	AUTHOR	ENGINEER
A	ER7895 - INITIAL RELEASE	1/21/2016	Z.WALK	Z.WALK
B	ER7915 - UPDATED NOTE BLOCK TO INCLUDE HAMMERED TEXTURE MS SPEC. SMALLER BEAM PLATES NOW HAVE NUTS AND BOLTS MOLDED INTO THE PLATES.	2/17/2016	Z.WALK	Z.WALK

TABLE OF CONTENTS	
PAGE TITLE	SHEET NUMBER
BEAM PLATES	1
BEAM PLATES 6X10 FRONT	2
BEAM PLATES 8X10 FRONT	3
BEAM PLATES 10X15 FRONT	4
BEAM PLATES 15X20 FRONT	5
BEAM PLATES 6X10 BACK	6
BEAM PLATES 8X10BACK	7
BEAM PLATES 10X15 BACK	8
BEAM PLATES 15X20 BACK	9
PLAIN BEAM PLATES	10

NOTES:

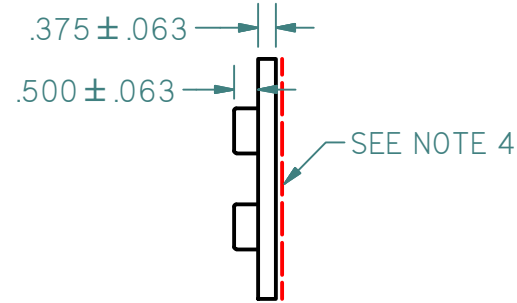
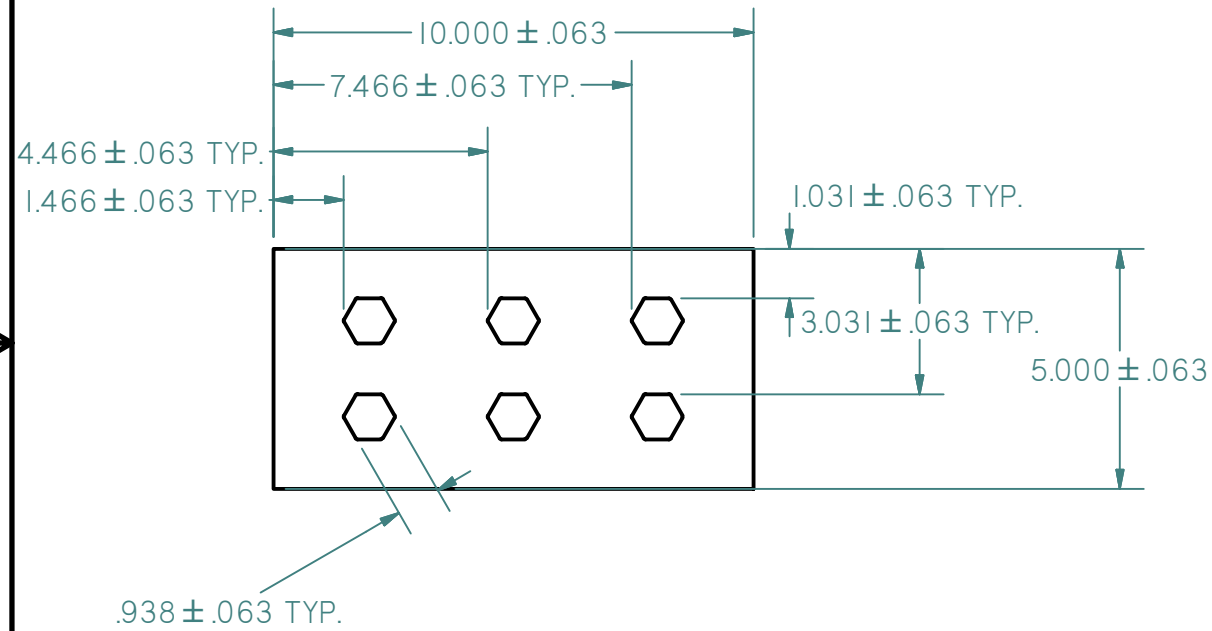
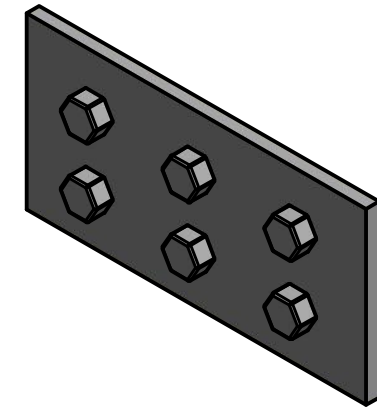
1. MATERIAL CLOSED CELL POLYURETHANE PER MS0072.
2. FOR SMOOTH AND HAMMERED TEXTURE BLACK PARTS USE SHERWIN WILLIAMS PAINTTEXTBLACK-R OR EQUIVALENT.
3. REFERENCE MATH DATA FOR ALL UNDIMENSIONED FEATURES.
4. RED DASHED LINES INDICATE SURFACES WHERE FINISH IS NOT REQUIRED. FINISHED SURFACES TO BE FREE OF MISSED SPOTS AND RUNS.
5. FOR TEXTURED PARTS REFERENCE MS0080.

UNLESS OTHERWISE SPECIFIED DIMENSIONS ARE IN INCHES						
	DRAWING TITLE: BEAM PLATE					
DECIMAL .XX = ± .03 .XXX = ± .015 FRACTIONAL ± 1/64 ANGULAR ± 1°	DRAWN BY: Z.WALK	DATE: 1/12/2016	CONFIDENTIAL DOCUMENT THIS DOCUMENT IS THE PROPERTY OF THERMA-TRU® CORPORATION AND IS NOT TO BE COPIED AND/OR DISCLOSED TO OTHERS WITHOUT PRIOR WRITTEN CONSENT.			
	CHECKED BY: M.BRAUN	DATE: 1/18/2016				
	APPROVED BY: B.BRYNER	DATE: 1/21/2016				

DD-00355

BEAM PLATES 6X10 FRONT B

REV	DESCRIPTION	DATE	AUTHOR	ENGINEER
A	ER7895 - INITIAL RELEASE	1/21/2016	Z.WALK	Z.WALK
B	ER7915 - UPDATED NOTE BLOCK TO INCLUDE HAMMERED TEXTURE MS SPEC. SMALLER BEAM PLATES NOW HAVE NUTS AND BOLTS MOLDED INTO THE PLATES.	2/17/2016	Z.WALK	Z.WALK



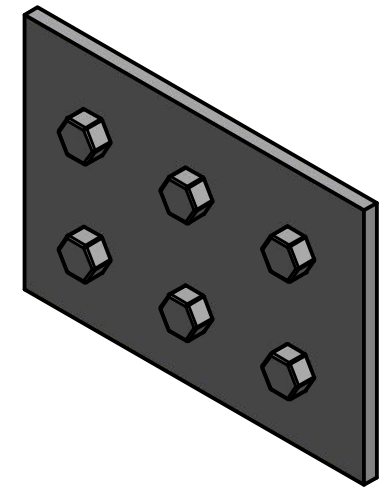
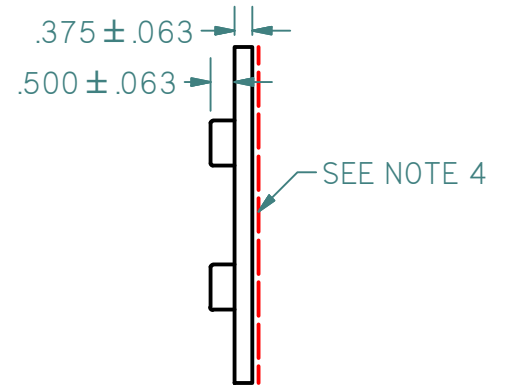
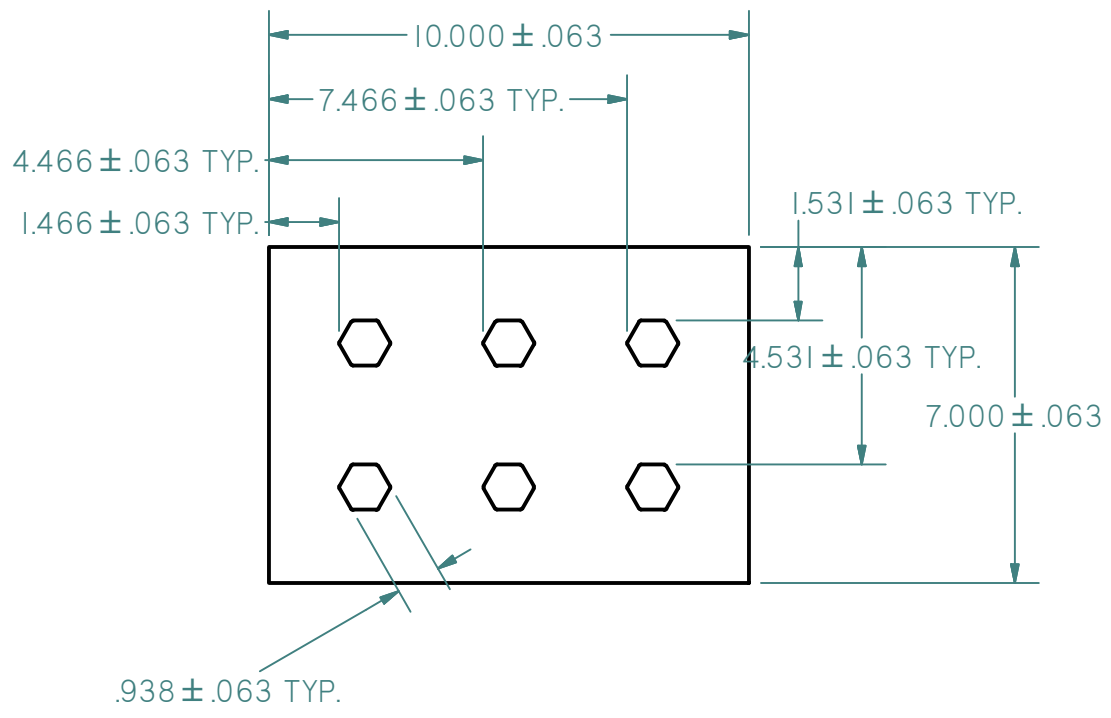
- NOTES:
1. MATERIAL CLOSED CELL POLYURETHANE PER MS0072.
 2. FOR SMOOTH AND HAMMERED TEXTURE BLACK PARTS USE SHERWIN WILLIAMS PAINTTEXTBLACK-R OR EQUIVALENT.
 3. REFERENCE MATH DATA FOR ALL UNDIMENSIONED FEATURES.
 4. RED DASHED LINES INDICATE SURFACES WHERE FINISH IS NOT REQUIRED. FINISHED SURFACES TO BE FREE OF MISSED SPOTS AND RUNS.
 5. FOR TEXTURED PARTS REFERENCE MS0080.

BEAM PLATES	
PART NUMBER	TEXTURE
BMPH6X10FRONT	HAMMERED
BMPTS6X10FRONT	SMOOTH

UNLESS OTHERWISE SPECIFIED DIMENSIONS ARE IN INCHES			DD-00355			
	DRAWING TITLE: BEAM PLATE					
DECIMAL .XX = ± .03 .XXX = ± .015 FRACTIONAL ± 1/64 ANGULAR ± 1°	DRAWN BY: Z.WALK	DATE: 1/12/2016	CONFIDENTIAL DOCUMENT THIS DOCUMENT IS THE PROPERTY OF THERMA-TRU® CORPORATION AND IS NOT TO BE COPIED AND/OR DISCLOSED TO OTHERS WITHOUT PRIOR WRITTEN CONSENT.			
	CHECKED BY: M.BRAUN	DATE: 1/18/2016				
	APPROVED BY: B.BRYNER	DATE: 1/21/2016	SCALE: 1:4	SHEET: 2 OF 10	DRAWING NO.: B1372	REV: B

BEAM PLATES 8X10 FRONT B

REV	DESCRIPTION	DATE	AUTHOR	ENGINEER
A	ER7895 - INITIAL RELEASE	1/21/2016	Z.WALK	Z.WALK
B	ER7915 - UPDATED NOTE BLOCK TO INCLUDE HAMMERED TEXTURE MS SPEC. SMALLER BEAM PLATES NOW HAVE NUTS AND BOLTS MOLDED INTO THE PLATES.	2/17/2016	Z.WALK	Z.WALK



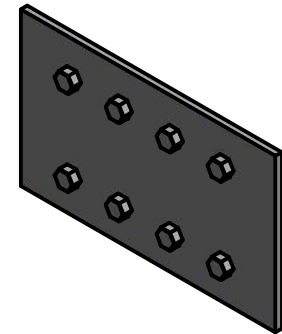
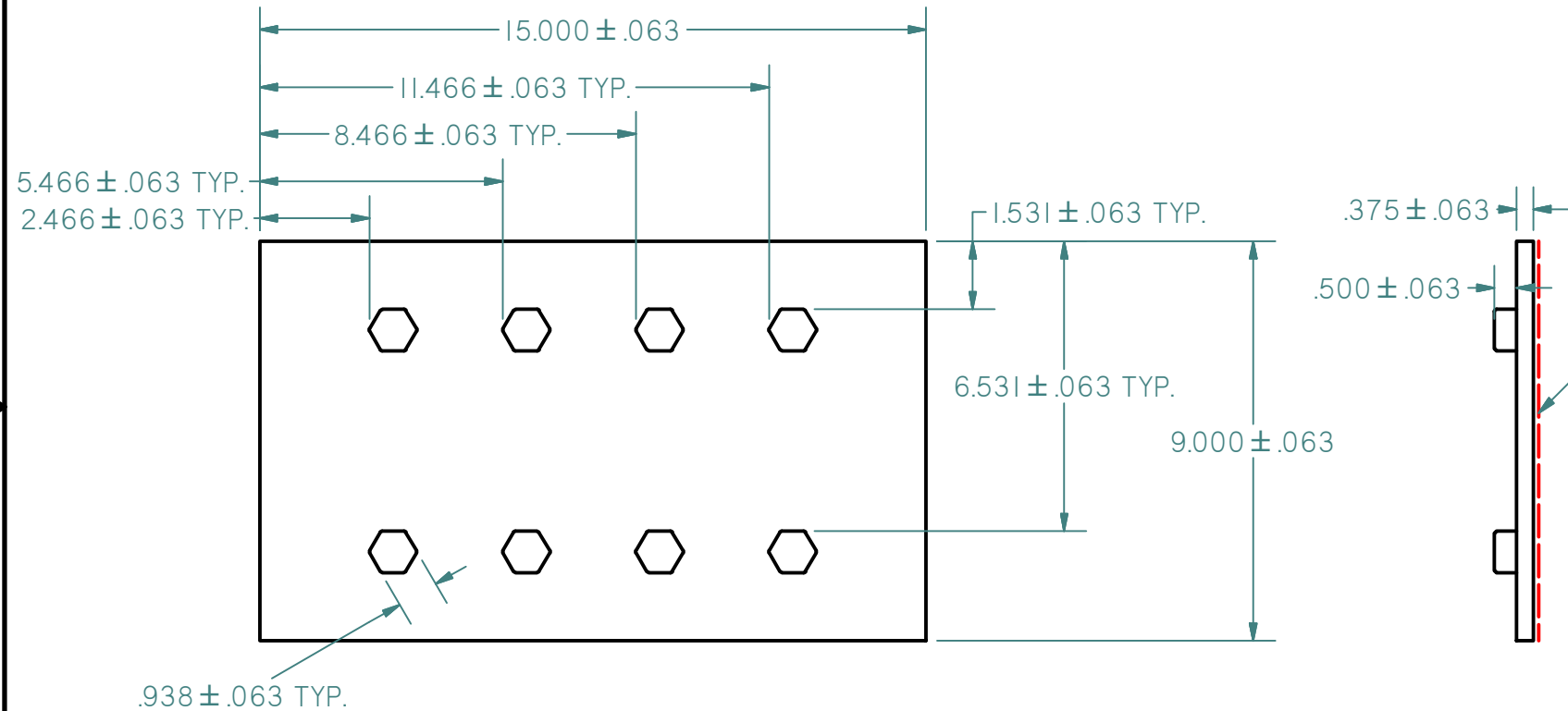
- NOTES:
1. MATERIAL CLOSED CELL POLYURETHANE PER MS0072.
 2. FOR SMOOTH AND HAMMERED TEXTURE BLACK PARTS USE SHERWIN WILLIAMS PAINTTEXTBLACK-R OR EQUIVALENT.
 3. REFERENCE MATH DATA FOR ALL UNDIMENSIONED FEATURES.
 4. RED DASHED LINES INDICATE SURFACES WHERE FINISH IS NOT REQUIRED. FINISHED SURFACES TO BE FREE OF MISSED SPOTS AND RUNS.
 5. FOR TEXTURED PARTS REFERENCE MS0080.

BEAM PLATES	
PART NUMBER	TEXTURE
BMPH8X10FRONT	HAMMERED
BMPTS8X10FRONT	SMOOTH

UNLESS OTHERWISE SPECIFIED DIMENSIONS ARE IN INCHES					
	DRAWING TITLE: BEAM PLATE				
DECIMAL .XX = ± .03 .XXX = ± .015 FRACTIONAL ± 1/64 ANGULAR ± 1°	DRAWN BY: Z.WALK	DATE: 1/12/2016	CONFIDENTIAL DOCUMENT THIS DOCUMENT IS THE PROPERTY OF THERMA-TRU® CORPORATION AND IS NOT TO BE COPIED AND/OR DISCLOSED TO OTHERS WITHOUT PRIOR WRITTEN CONSENT.		
	CHECKED BY: M.BRAUN	DATE: 1/18/2016			
	APPROVED BY: B.BRYNER	DATE: 1/21/2016			SCALE: 1:4

BEAM PLATES 10X15 FRONT B

REV	DESCRIPTION	DATE	AUTHOR	ENGINEER
A	ER7895 - INITIAL RELEASE	1/21/2016	Z.WALK	Z.WALK
B	ER7915 - UPDATED NOTE BLOCK TO INCLUDE HAMMERED TEXTURE MS SPEC. SMALLER BEAM PLATES NOW HAVE NUTS AND BOLTS MOLDED INTO THE PLATES.	2/17/2016	Z.WALK	Z.WALK



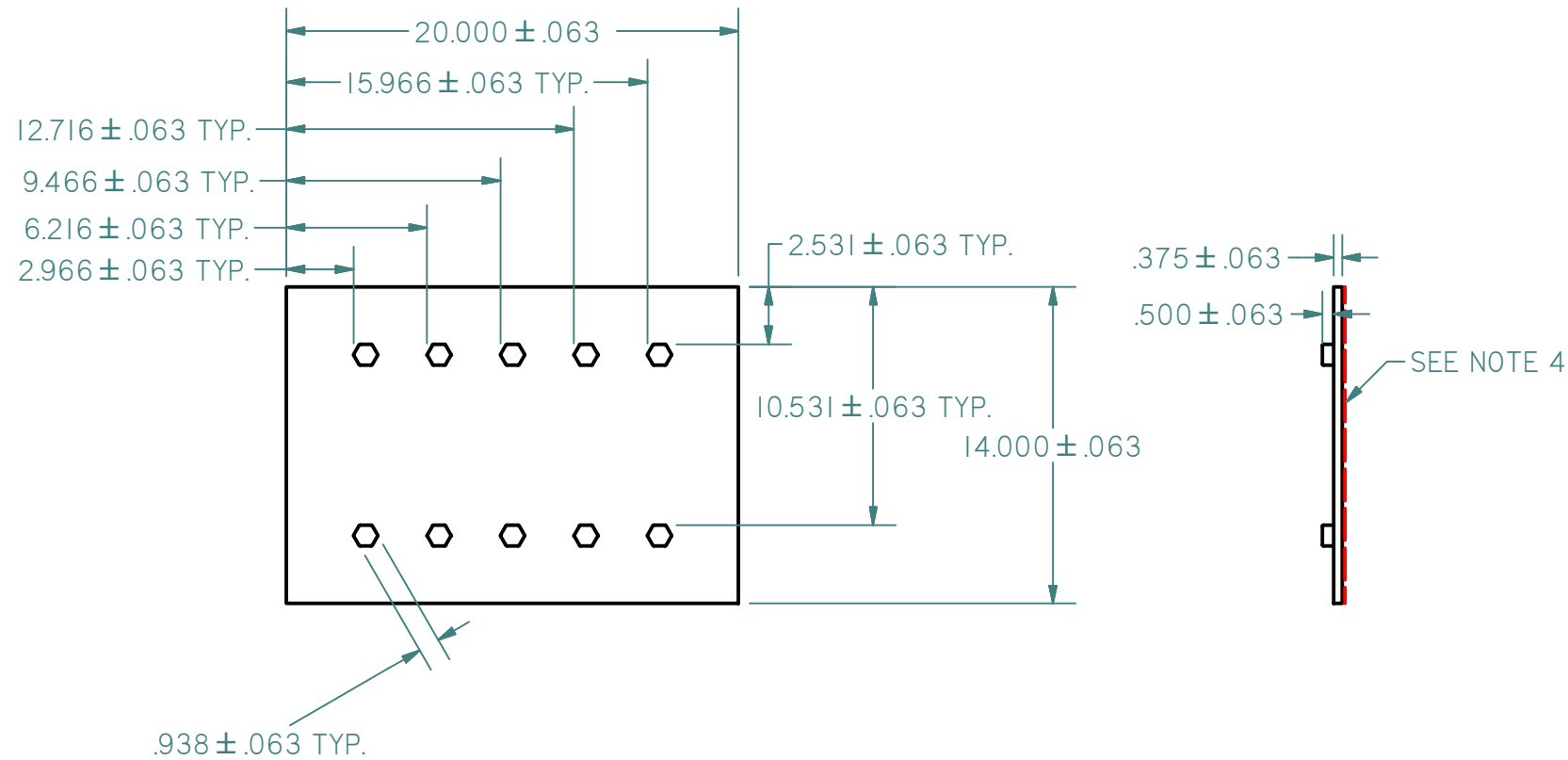
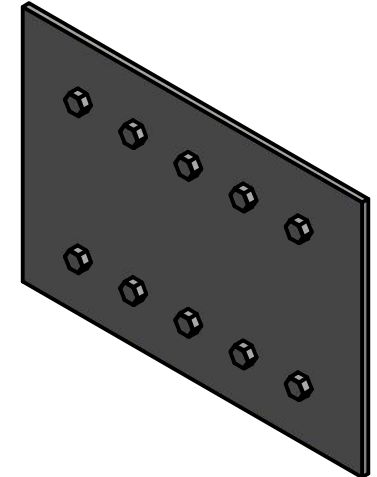
- NOTES:
1. MATERIAL CLOSED CELL POLYURETHANE PER MS0072.
 2. FOR SMOOTH AND HAMMERED TEXTURE BLACK PARTS USE SHERWIN WILLIAMS PAINTTEXTBLACK-R OR EQUIVALENT.
 3. REFERENCE MATH DATA FOR ALL UNDIMENSIONED FEATURES.
 4. RED DASHED LINES INDICATE SURFACES WHERE FINISH IS NOT REQUIRED. FINISHED SURFACES TO BE FREE OF MISSED SPOTS AND RUNS.
 5. FOR TEXTURED PARTS REFERENCE MS0080.

BEAM PLATES	
PART NUMBER	TEXTURE
BMPH10X15FRONT	HAMMERED
BMPTS10X15FRONT	SMOOTH

UNLESS OTHERWISE SPECIFIED DIMENSIONS ARE IN INCHES					
	DRAWING TITLE: BEAM PLATE				
DECIMAL .XX = ± .03 .XXX = ± .015 FRACTIONAL ± 1/64 ANGULAR ± 1°	DRAWN BY: Z.WALK	DATE: 1/12/2016	CONFIDENTIAL DOCUMENT THIS DOCUMENT IS THE PROPERTY OF THERMA-TRU® CORPORATION AND IS NOT TO BE COPIED AND/OR DISCLOSED TO OTHERS WITHOUT PRIOR WRITTEN CONSENT.		
	CHECKED BY: M.BRAUN	DATE: 1/18/2016			
	APPROVED BY: B.BRYNER	DATE: 1/21/2016			SCALE: 1:4

BEAM PLATE 15X20 FRONT B

REV	DESCRIPTION	DATE	AUTHOR	ENGINEER
A	ER7895 - INITIAL RELEASE	1/21/2016	Z.WALK	Z.WALK
B	ER7915 - UPDATED NOTE BLOCK TO INCLUDE HAMMERED TEXTURE MS SPEC. SMALLER BEAM PLATES NOW HAVE NUTS AND BOLTS MOLDED INTO THE PLATES.	2/17/2016	Z.WALK	Z.WALK



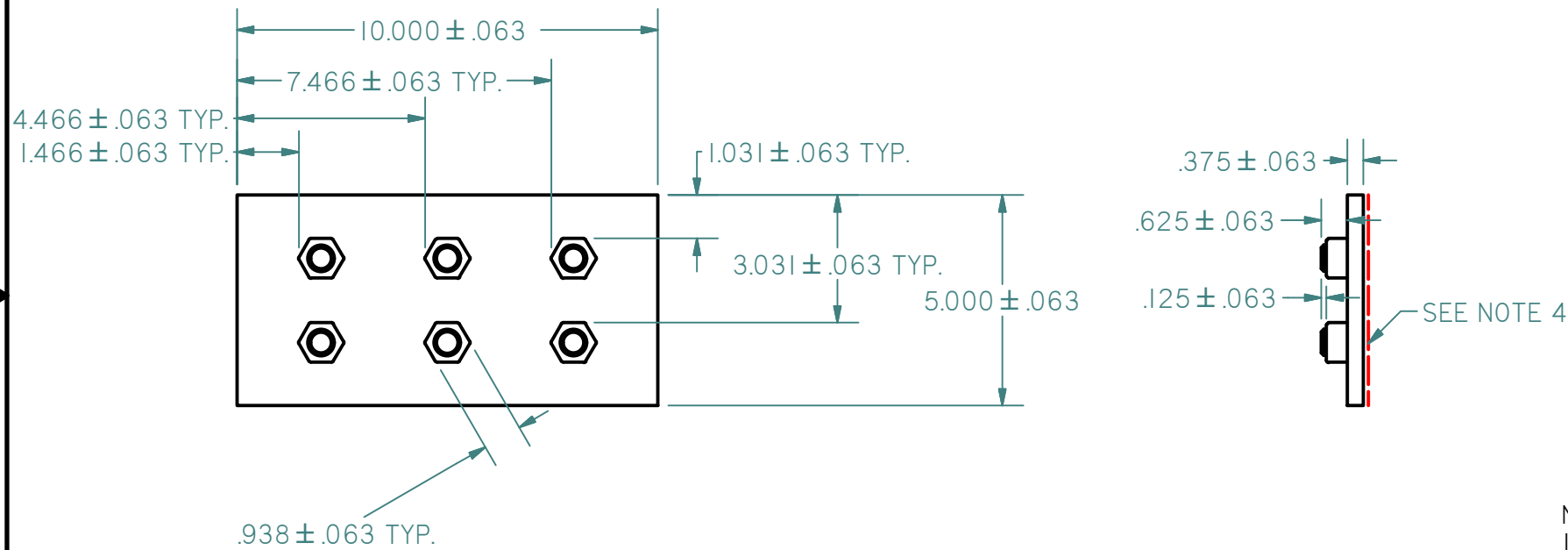
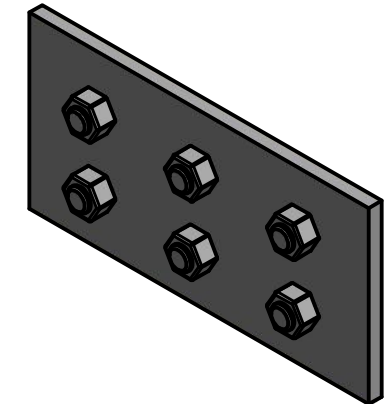
- NOTES:
1. MATERIAL CLOSED CELL POLYURETHANE PER MS0072.
 2. FOR SMOOTH AND HAMMERED TEXTURE BLACK PARTS USE SHERWIN WILLIAMS PAINTTEXTBLACK-R OR EQUIVALENT.
 3. REFERENCE MATH DATA FOR ALL UNDIMENSIONED FEATURES.
 4. RED DASHED LINES INDICATE SURFACES WHERE FINISH IS NOT REQUIRED. FINISHED SURFACES TO BE FREE OF MISSED SPOTS AND RUNS.
 5. FOR TEXTURED PARTS REFERENCE MS0080.

BEAM PLATES	
PART NUMBER	TEXTURE
BMPHTI5X20FRONT	HAMMERED
BMPTS15X20FRONT	SMOOTH

UNLESS OTHERWISE SPECIFIED DIMENSIONS ARE IN INCHES					
	DRAWING TITLE: BEAM PLATE				
DECIMAL .XX = ± .03 .XXX = ± .015 FRACTIONAL ± 1/64 ANGULAR ± 1°	DRAWN BY: Z.WALK	DATE: 1/12/2016	CONFIDENTIAL DOCUMENT THIS DOCUMENT IS THE PROPERTY OF THERMA-TRU® CORPORATION AND IS NOT TO BE COPIED AND/OR DISCLOSED TO OTHERS WITHOUT PRIOR WRITTEN CONSENT.		
	CHECKED BY: M.BRAUN	DATE: 1/18/2016			
	APPROVED BY: B.BRYNER	DATE: 1/21/2016	SCALE: 1:4	SHEET: 5 OF 10	DRAWING NO.: B1372

BEAM PLATE 6X10 BACK B

REV	DESCRIPTION	DATE	AUTHOR	ENGINEER
A	ER7895 - INITIAL RELEASE	1/21/2016	Z.WALK	Z.WALK
B	ER7915 - UPDATED NOTE BLOCK TO INCLUDE HAMMERED TEXTURE MS SPEC. SMALLER BEAM PLATES NOW HAVE NUTS AND BOLTS MOLDED INTO THE PLATES.	2/17/2016	Z.WALK	Z.WALK



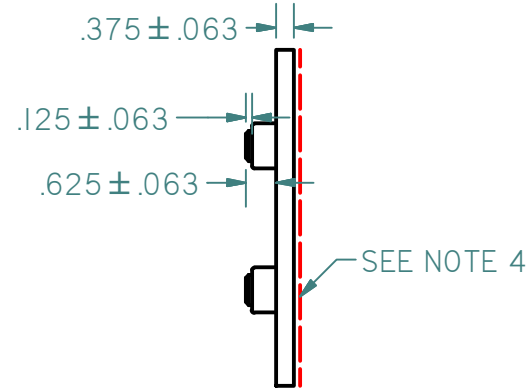
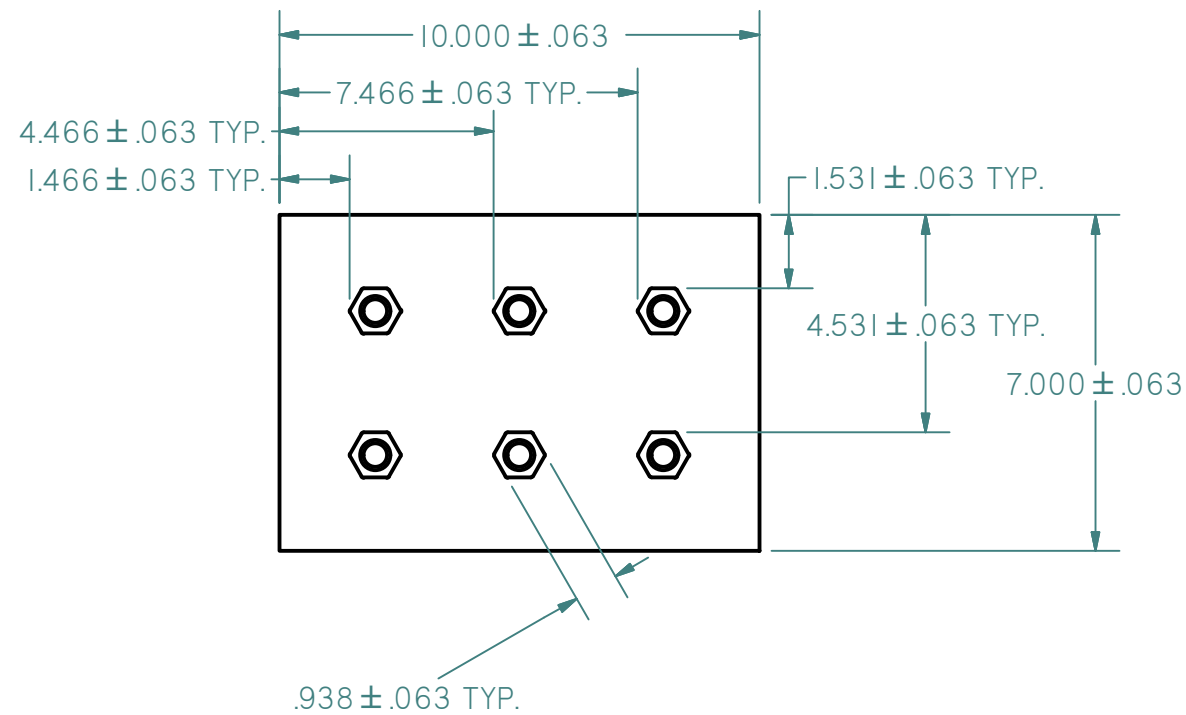
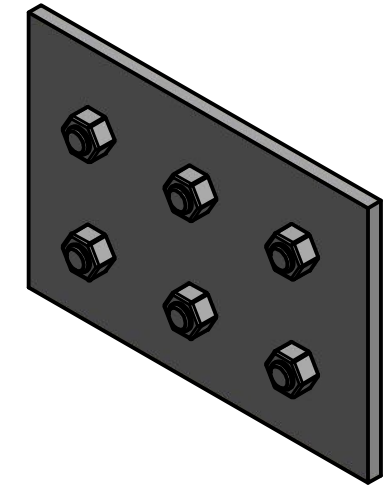
- NOTES:
- MATERIAL CLOSED CELL POLYURETHANE PER MS0072.
 - FOR SMOOTH AND HAMMERED TEXTURE BLACK PARTS USE SHERWIN WILLIAMS PAINTTEXTBLACK-R OR EQUIVALENT.
 - REFERENCE MATH DATA FOR ALL UNDIMENSIONED FEATURES.
 - RED DASHED LINES INDICATE SURFACES WHERE FINISH IS NOT REQUIRED. FINISHED SURFACES TO BE FREE OF MISSED SPOTS AND RUNS.
 - FOR TEXTURED PARTS REFERENCE MS0080.

BEAM PLATES	
PART NUMBER	TEXTURE
BMPH6X10BACK	HAMMERED
BMPTS6X10BACK	SMOOTH

UNLESS OTHERWISE SPECIFIED DIMENSIONS ARE IN INCHES			DD-00355			
	DRAWING TITLE: BEAM PLATE					
DECIMAL .XX = ± .03 .XXX = ± .015 FRACTIONAL ± 1/64 ANGULAR ± 1°	DRAWN BY: Z.WALK	DATE: 1/12/2016	CONFIDENTIAL DOCUMENT THIS DOCUMENT IS THE PROPERTY OF THERMA-TRU® CORPORATION AND IS NOT TO BE COPIED AND/OR DISCLOSED TO OTHERS WITHOUT PRIOR WRITTEN CONSENT.			
	CHECKED BY: M.BRAUN	DATE: 1/18/2016				
	APPROVED BY: B.BRYNER	DATE: 1/21/2016	SCALE: 1:4	SHEET: 6 OF 10	DRAWING NO.: B1372	REV: B

BEAM PLATE 8X10 BACK B

REV	DESCRIPTION	DATE	AUTHOR	ENGINEER
A	ER7895 - INITIAL RELEASE	1/21/2016	Z.WALK	Z.WALK
B	ER7915 - UPDATED NOTE BLOCK TO INCLUDE HAMMERED TEXTURE MS SPEC. SMALLER BEAM PLATES NOW HAVE NUTS AND BOLTS MOLDED INTO THE PLATES.	2/17/2016	Z.WALK	Z.WALK



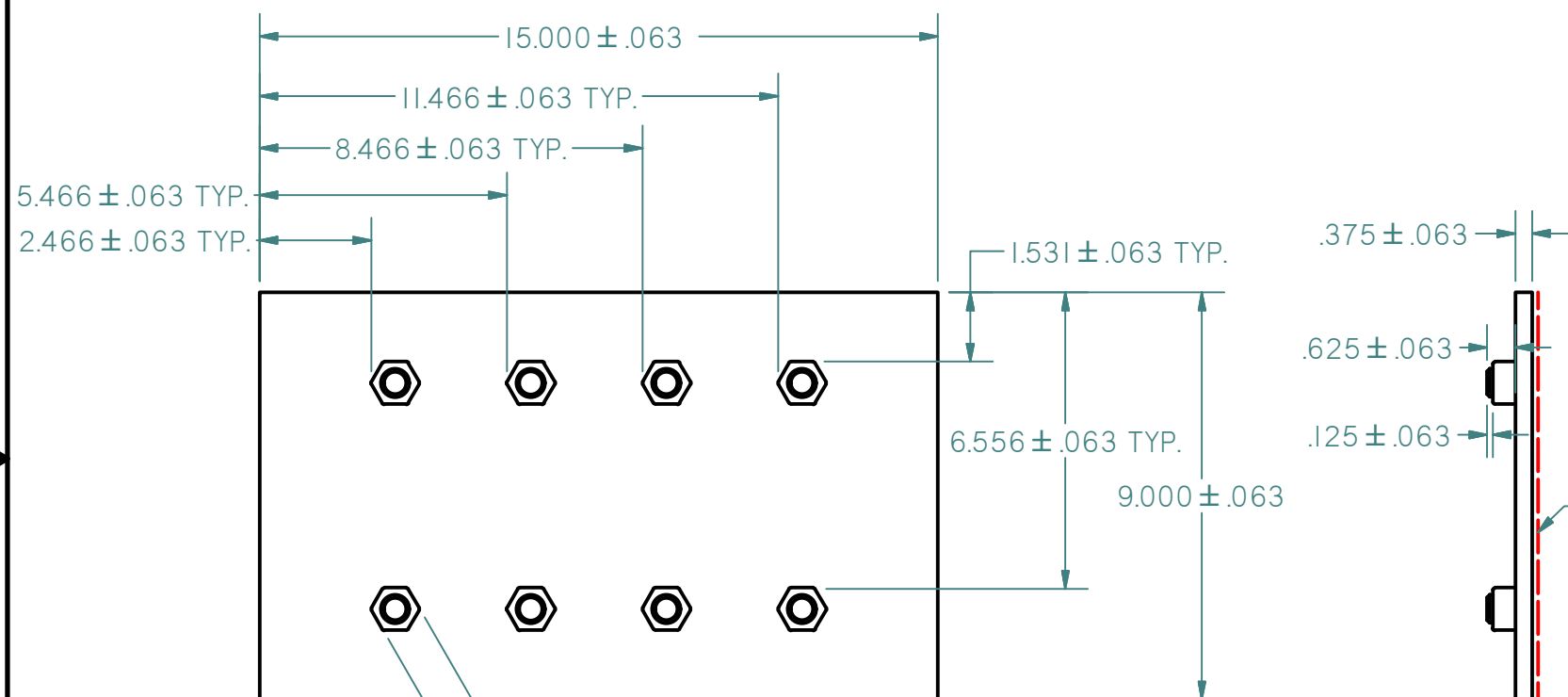
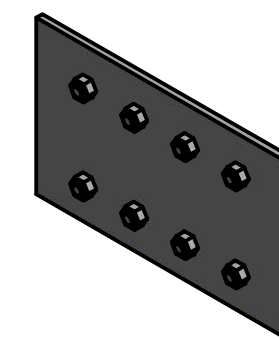
- NOTES:
1. MATERIAL CLOSED CELL POLYURETHANE PER MS0072.
 2. FOR SMOOTH AND HAMMERED TEXTURE BLACK PARTS USE SHERWIN WILLIAMS PAINTTEXTBLACK-R OR EQUIVALENT.
 3. REFERENCE MATH DATA FOR ALL UNDIMENSIONED FEATURES.
 4. RED DASHED LINES INDICATE SURFACES WHERE FINISH IS NOT REQUIRED. FINISHED SURFACES TO BE FREE OF MISSED SPOTS AND RUNS.
 5. FOR TEXTURED PARTS REFERENCE MS0080.

BEAM PLATES	
PART NUMBER	TEXTURE
BMPH8X10BACK	HAMMERED
BMPTS8X10BACK	SMOOTH

UNLESS OTHERWISE SPECIFIED DIMENSIONS ARE IN INCHES			DD-00355			
	DRAWING TITLE: BEAM PLATE					
DECIMAL .XX = ± .03 .XXX = ± .015 FRACTIONAL ± 1/64 ANGULAR ± 1°	DRAWN BY: Z.WALK	DATE: 1/12/2016	CONFIDENTIAL DOCUMENT THIS DOCUMENT IS THE PROPERTY OF THERMA-TRU® CORPORATION AND IS NOT TO BE COPIED AND/OR DISCLOSED TO OTHERS WITHOUT PRIOR WRITTEN CONSENT.			
	CHECKED BY: M.BRAUN	DATE: 1/18/2016				
	APPROVED BY: B.BRYNER	DATE: 1/21/2016	SCALE: 1:4	SHEET: 7 OF 10	DRAWING NO.: B1372	REV: B

BEAM PLATE 10X15 BACK B

REV	DESCRIPTION	DATE	AUTHOR	ENGINEER
A	ER7895 - INITIAL RELEASE	1/21/2016	Z.WALK	Z.WALK
B	ER7915 - UPDATED NOTE BLOCK TO INCLUDE HAMMERED TEXTURE MS SPEC. SMALLER BEAM PLATES NOW HAVE NUTS AND BOLTS MOLDED INTO THE PLATES.	2/17/2016	Z.WALK	Z.WALK



- NOTES:
1. MATERIAL CLOSED CELL POLYURETHANE PER MS0072.
 2. FOR SMOOTH AND HAMMERED TEXTURE BLACK PARTS USE SHERWIN WILLIAMS PAINTTEXTBLACK-R OR EQUIVALENT.
 3. REFERENCE MATH DATA FOR ALL UNDIMENSIONED FEATURES.
 4. RED DASHED LINES INDICATE SURFACES WHERE FINISH IS NOT REQUIRED. FINISHED SURFACES TO BE FREE OF MISSED SPOTS AND RUNS.
 5. FOR TEXTURED PARTS REFERENCE MS0080.

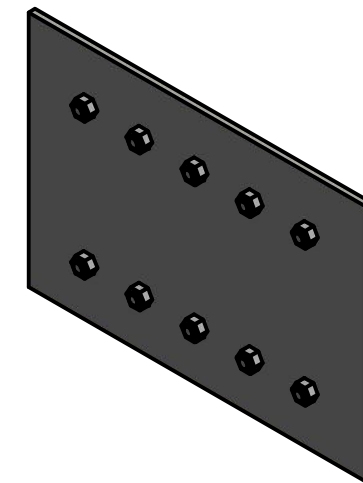
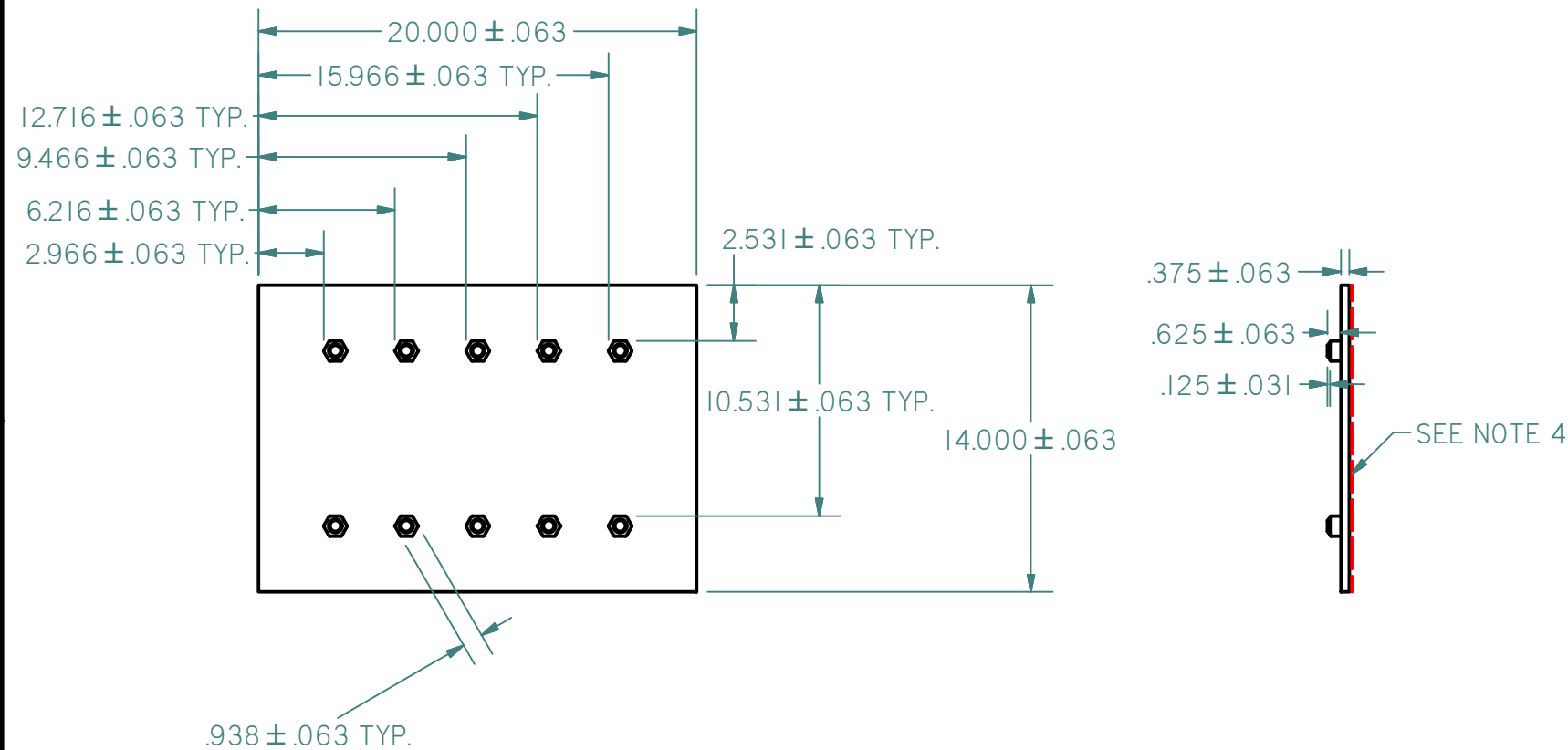
BEAM PLATES	
PART NUMBER	TEXTURE
BMPTH10X15BACK	HAMMERED
BMPTS10X15BACK	SMOOTH

UNLESS OTHERWISE SPECIFIED DIMENSIONS ARE IN INCHES					
	DRAWING TITLE: BEAM PLATE				
DECIMAL .XX = ± .03 .XXX = ± .015 FRACTIONAL ± 1/64 ANGULAR ± 1°	DRAWN BY: Z.WALK	DATE: 1/12/2016	CONFIDENTIAL DOCUMENT THIS DOCUMENT IS THE PROPERTY OF THERMA-TRU® CORPORATION AND IS NOT TO BE COPIED AND/OR DISCLOSED TO OTHERS WITHOUT PRIOR WRITTEN CONSENT.		
	CHECKED BY: M.BRAUN	DATE: 1/18/2016			
	APPROVED BY: B.BRYNER	DATE: 1/21/2016			SCALE: 1:4

DD-00355

BEAM PLATE 15X20 BACK B

REV	DESCRIPTION	DATE	AUTHOR	ENGINEER
A	ER7895 - INITIAL RELEASE	1/21/2016	Z.WALK	Z.WALK
B	ER7915 - UPDATED NOTE BLOCK TO INCLUDE HAMMERED TEXTURE MS SPEC. SMALLER BEAM PLATES NOW HAVE NUTS AND BOLTS MOLDED INTO THE PLATES.	2/17/2016	Z.WALK	Z.WALK



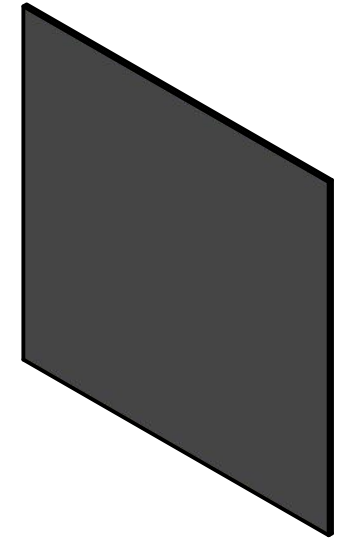
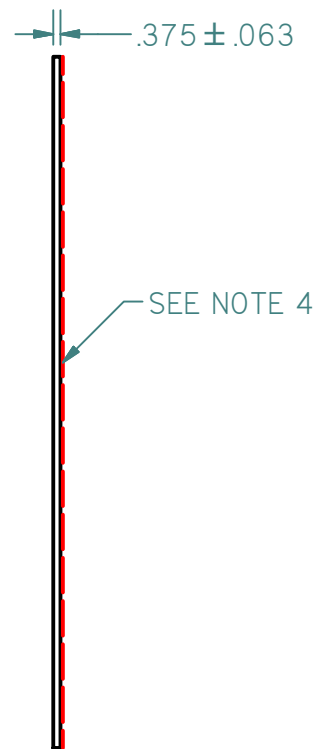
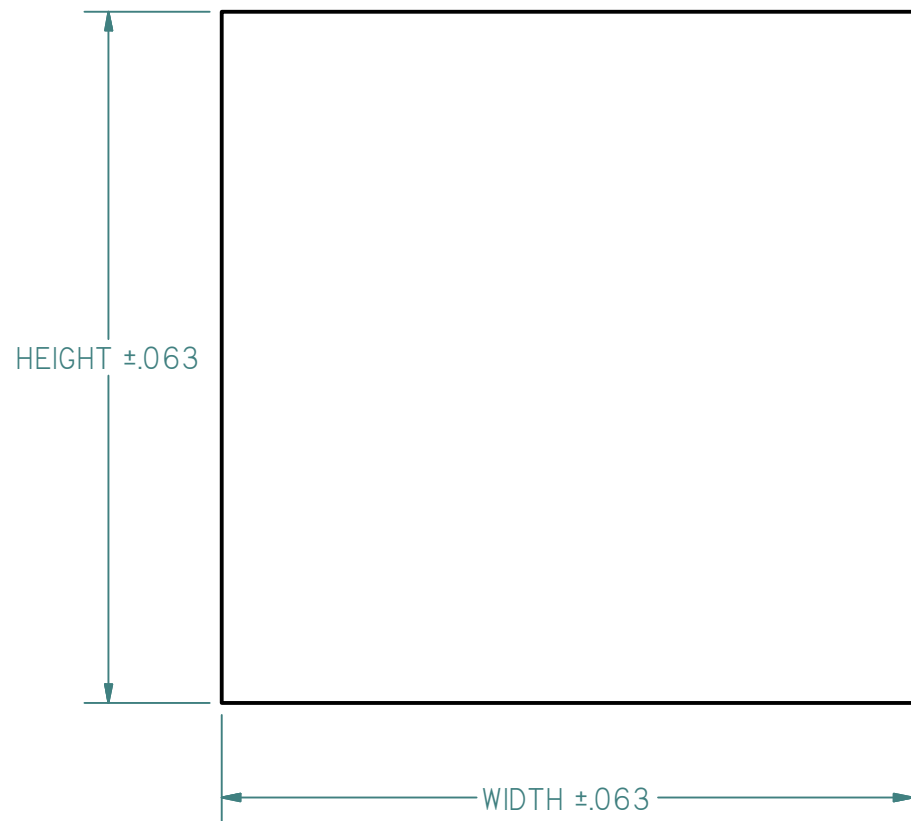
- NOTES:
1. MATERIAL CLOSED CELL POLYURETHANE PER MS0072.
 2. FOR SMOOTH AND HAMMERED TEXTURE BLACK PARTS USE SHERWIN WILLIAMS PAINTTEXTBLACK-R OR EQUIVALENT.
 3. REFERENCE MATH DATA FOR ALL UNDIMENSIONED FEATURES.
 4. RED DASHED LINES INDICATE SURFACES WHERE FINISH IS NOT REQUIRED. FINISHED SURFACES TO BE FREE OF MISSED SPOTS AND RUNS.
 5. FOR TEXTURED PARTS REFERENCE MS0080.

BEAM PLATES	
PART NUMBER	TEXTURE
BMPTH15X20BACK	HAMMERED
BMPTS15X20BACK	SMOOTH

UNLESS OTHERWISE SPECIFIED DIMENSIONS ARE IN INCHES				
	DRAWING TITLE: BEAM PLATE			
DECIMAL .XX = ± .03 .XXX = ± .015 FRACTIONAL ± 1/64 ANGULAR ± 1°	DRAWN BY: Z.WALK	DATE: 1/12/2016	CONFIDENTIAL DOCUMENT THIS DOCUMENT IS THE PROPERTY OF THERMA-TRU® CORPORATION AND IS NOT TO BE COPIED AND/OR DISCLOSED TO OTHERS WITHOUT PRIOR WRITTEN CONSENT.	
	CHECKED BY: M.BRAUN	DATE: 1/18/2016		
	APPROVED BY: B.BRYNER	DATE: 1/21/2016	SCALE: 1:4	SHEET: 9 OF 10
			DRAWING NO.: B1372	REV: B

PLAIN BEAM PLATES B

REV	DESCRIPTION	DATE	AUTHOR	ENGINEER
A	ER7895 - INITIAL RELEASE	1/21/2016	Z.WALK	Z.WALK
B	ER7915 - UPDATED NOTE BLOCK TO INCLUDE HAMMERED TEXTURE MS SPEC. SMALLER BEAM PLATES NOW HAVE NUTS AND BOLTS MOLDED INTO THE PLATES.	2/17/2016	Z.WALK	Z.WALK



- NOTES:
1. MATERIAL CLOSED CELL POLYURETHANE PER MS0072.
 2. FOR SMOOTH AND HAMMERED TEXTURE BLACK PARTS USE SHERWIN WILLIAMS PAINTTEXTBLACK-R OR EQUIVALENT.
 3. REFERENCE MATH DATA FOR ALL UNDIMENSIONED FEATURES.
 4. RED DASHED LINES INDICATE SURFACES WHERE FINISH IS NOT REQUIRED. FINISHED SURFACES TO BE FREE OF MISSED SPOTS AND RUNS.
 5. FOR TEXTURED PARTS REFERENCE MS0080.

BEAM PLATES		
PART NUMBER	WIDTH	HEIGHT
BMPTS36X36-SA	36.000	36.000
BMPTS48X48-SA	48.000	48.000
BMPTH36X36-SA	36.000	36.000
BMPTH48X48-SA	48.000	48.000

UNLESS OTHERWISE SPECIFIED DIMENSIONS ARE IN INCHES					
	DRAWING TITLE: BEAM PLATE				
DECIMAL .XX = $\pm .03$.XXX = $\pm .015$ FRACTIONAL $\pm 1/64$ ANGULAR $\pm 1^\circ$	DRAWN BY: Z.WALK	DATE: 1/12/2016	CONFIDENTIAL DOCUMENT THIS DOCUMENT IS THE PROPERTY OF THERMA-TRU® CORPORATION AND IS NOT TO BE COPIED AND/OR DISCLOSED TO OTHERS WITHOUT PRIOR WRITTEN CONSENT.		
	CHECKED BY: M.BRAUN	DATE: 1/18/2016			
	APPROVED BY: B.BRYNER	DATE: 1/21/2016	SCALE: 1:4	SHEET: 10 OF 10	DRAWING NO.: B1372