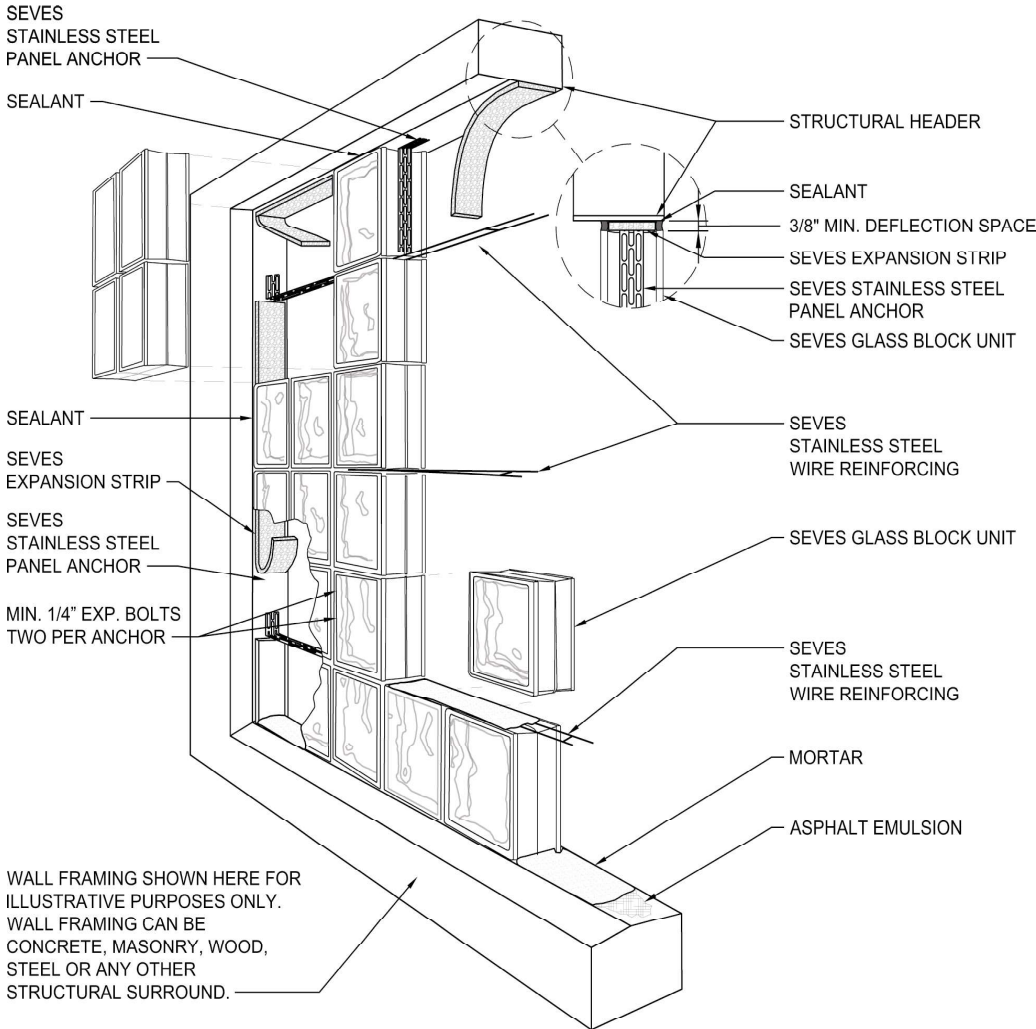


## Glass Block Panel Anchor, Wire Reinforcement & Expansion Material

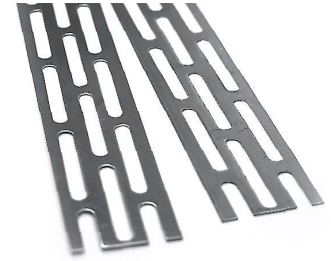
Seves Glass Block Inc. | 10576 Broadview Road, Cleveland, Ohio 44147  
Phone: 1-440-627-6257 or Toll Free: 1-877-SEVES11 (1-877-738-3711) | www.sevesglassblockinc.com



**PANEL ANCHOR CONSTRUCTION ASSEMBLY**

### 1 3/4' X 16" X 20GA

Material Conformance  
Stainless Steel AISI Type 304  
ASTM A666, ASTM A480, ASTM A240/  
A240M, ASTM A167



### 3" X 16" X 3/8"

Polyethylene Foam

Physical Properties	Test Method	Value*
Recovery (%)	ASTM D545 05	97.8%
Extrusion (in)	ASTM D545 05	0.12
Compressive Strength (psi)	ASTM D545 05 @ 50%	14.9
Compression Set (%)	ASTM D3575-00 SUFFIX B	18.3%
Tensile Stress (psi)	ASTM D3575-00 SUFFIX T	103 / 68
Tear Resistance (lb/in) md/cmd	ASTM D3575-00 SUFFIX G	14 / 24
Density (lb/ft <sup>3</sup> )	ASTM D3575-00	1.7 (NOMINAL)
Water Absorption (lb/ft <sup>2</sup> )	ASTM 545-00	0.001

Meets Application Requirements of:  
**ASTM D 4819**



### 9GA. SS x 1-5/8' x 3', 4', 7' OR 10' LENGTHS

ASTM A951 / A951M (Std. Specification for Steel Wire for Masonry Joint Reinforcement)  
ACI / ASCE 530 (Building Code Requirements for Masonry Structures)  
Wire (Stainless Steel): ASTM A580 / ASTM 580M - AISI Type 304

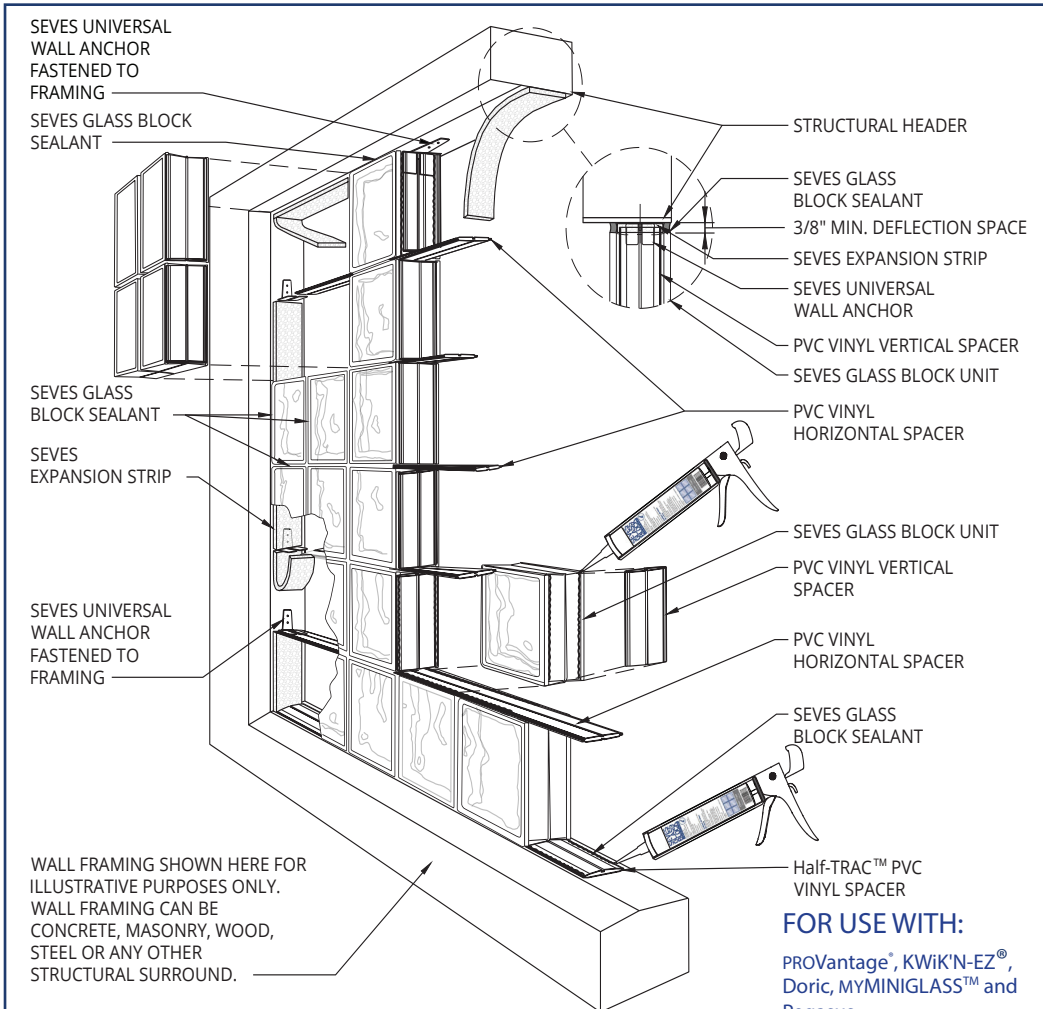
### WIRE DIAMETER:

9 gauge (.148" or w1.7)  
Side Rods and Cross Rods available in any combination of the above.  
Cross welded 12" or 16" O.C.  
Panel Reinforcing: two parallel 9 gauge wires either 1-5/8 inch or 2 inch on center with electrically butt-welded cross wires spaced at regular intervals.



## Silicone, Vinyl Spacer, Wall Anchor & Expansion Material

Seves Glass Block Inc. | 10576 Broadview Road, Cleveland, Ohio 44147  
Phone: 1-440-627-6257 or Toll Free: 1-877-SEVES11 (1-877-738-3711) | www.sevesglassblockinc.com



### Silicone and Vinyl Spacer Construction Assembly

Distributed By:



#### UNIVERSAL WALL ANCHOR:

Stainless Steel AISI Type 304  
Material Conformance: ASTM A666, ASTM A480, ASTM A240/A240M, ASTM A167



#### Polyethylene Foam 3" X 16" X 3/8"



Meets Application Requirements of:  
ASTM D 4819

MIN. 1/4" BEAD OF SEVES GLASS BLOCK SEALANT

GLASS BLOCK

MIN. 1/4" BEAD OF SEVES GLASS BLOCK SEALANT

VINYL SPACER

Seves Glass Block Sealant is a one component, low modulus, neutral cure silicone sealant and adhesive specifically formulated to work with Seves PROVantage®, Seves Kwik'N EZ®, Doric, MYMINIGLASS™ and Pegasus Glass Block Installation Systems. Seves Glass Block Sealant also bonds to a wide variety of building substrata. This product is specifically formulated to offer all weather performance to meet today's Green Building Standards.

**Perimeter Channels**  
Vinyl perimeter channels for smaller applications. (Residential & light commercial applications in lieu of Universal Wall Anchors.)

**Horizontal/Vertical Vinyl Spacers**  
Vinyl spacer with groove to accept grout finish. Allows for the use of both silicone or grout external finishes.

**Pegasus Vinyl Spacers**  
Manufactured exclusively to fit the deeper profile of the Pegasus Line Products.

**Doric Vinyl Spacers**  
Manufactured exclusively to fit the deeper profile of the Q19 Doric.

